



Community Health & Family Medicine

# ANNUAL REPORT

2019-2020

**UF** | Department of Community  
Health and Family Medicine  
UNIVERSITY of FLORIDA



Peter J. Carek, MD, MS, CAQSM  
Professor and Chairman  
Community Health and Family  
Medicine

## LETTER FROM THE CHAIRMAN

I welcome you to the Annual Report for the Department of Community Health and Family Medicine at the University of Florida College of Medicine 2019-2020. This report highlights the many activities and achievements of our faculty members as well as many of our nurses and staff members during this past year. As you will notice, members of our department are actively involved in and providing leadership in all areas – patient care, education, and scholarship.

The last six months of this year presented several unique challenges for everyone. Despite these trials, our faculty continued to demonstrate their commitment to provide the highest quality of care to our patients and education to our learners.

Our department continued to expand our patient care activities through recruitment of physician faculty as well as adding Advanced Practice Providers to most of our clinic settings. Our medical student, residency, and fellowship programs continued to recruit and graduate the next generations of physicians. Our scholarly activity continued to influence the practice of medicine.

Overall, we had an other great year as a department and look forward to serving our patients, learners, and community in the years ahead.

*Respectfully,*

*Peter J. Carek, MD, MS, CAQSM*

*C. Sue and Louis C. Murray, MD Professor and Chair*

# WHAT WE STAND FOR

## OUR MISSION

To serve our patients and community, positively shaping the future of healthcare through outstanding teaching, discovery, and innovation in family medicine.

## OUR VISION

To be a nationally recognized model department of family medicine.



# TABLE OF CONTENTS

01

Faculty and Providers

03

Clinical Services

13

Medical Student Education Program

17

Bioethics, Law and Medical Professionalism Program

19

Resident Education Program

21

Sports Medicine Fellowship

22

Community Health

26

Awards and Achievements

28

Grants and Research

30

Administrative Services and Committees

42

Publications, Presentations, and Posters



# FACULTY AND PROVIDERS



**July 1, 2019**

Dr. Karen Hall retired from CHFM on July 1, 2019. Dr. Hall has been a faculty member in Family Medicine since 1987 and was awarded the distinction of Emeritus Professor.

Karen Hall, MD



**December 1, 2019**

Dr. Velyn Wu joined CHFM on December 1, 2019 at UF Health Family Medicine - Main. Her clinical interests include musculoskeletal certification and point of care ultrasound applications.

Velyn WU, MD, CAQSM



Michael Tudeen, MD



Angelica Estrella, DNP, APRN



**September 27, 2019**

Dr. Michael Tudeen joined CHFM on September 27, 2019 at UF Health Family Medicine - Main. His clinical interests include child health, family planning, transgender health, and point of care ultrasound applications.



**December 28, 2019**

Angelica Estrella joined CHFM on December 28, 2019 as an APRN at UF Health Family Medicine - Haile. Her clinical interests include women's health and integrative medicine.

# FACULTY AND PROVIDERS



**April 3, 2020**

Dr. Megan LaBuz joined CHFM on April 3, 2020 at UF Health Family Medicine - Main. Her clinical interests include treatment of sports medicine and musculoskeletal injuries.

Megan LaBuz, MD, CAQSM



**June 15, 2020**

Antoinette Evelyn joined CHFM on June 15, 2020 as an APRN at UF Health Family Medicine - Eastside. Her clinical interests include pain management and care of children with sickle cell disease.

Antoinette Evelyn, DNP, APRN, CPNP-PC

Amelie Middlemas, DNP, APRN



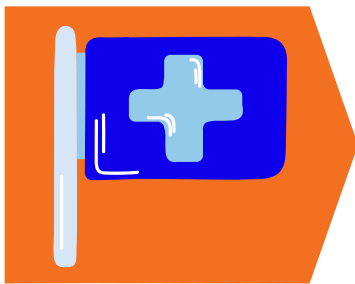
**April 20, 2020**

Amelie Middlemas joined CHFM on April 20, 2020 as an APRN at UF Health Family Medicine - Old Town. Her clinical interests include disease prevention, health maintenance, and acute issues.

# CLINICAL SERVICES

University of Florida Health Physicians, (UFHP) is responsible for managing the clinical component of the University of Florida College of Medicine faculty practice plan. UF Health Family Medicine includes eight clinical locations throughout the North Central Florida area. Each clinic has a medical director and an Ambulatory Care Unit (ACU) manager who oversees the day-to-day operations of the clinic.

We have a large, unique, and diverse patient population that we serve beyond our core clinics. Our physicians work closely with patients who visit the [Equal Access Center](#) and the [Mobile Outreach Clinic](#) (MOC) to provide high-quality care. The department also hosts patient care outside of the regular business day through our Extended Hours clinic.



**8 CLINICS**



**46 PHYSICIANS**  
**2 PHARMACISTS**  
**6 APRNS**  
**1 PA**



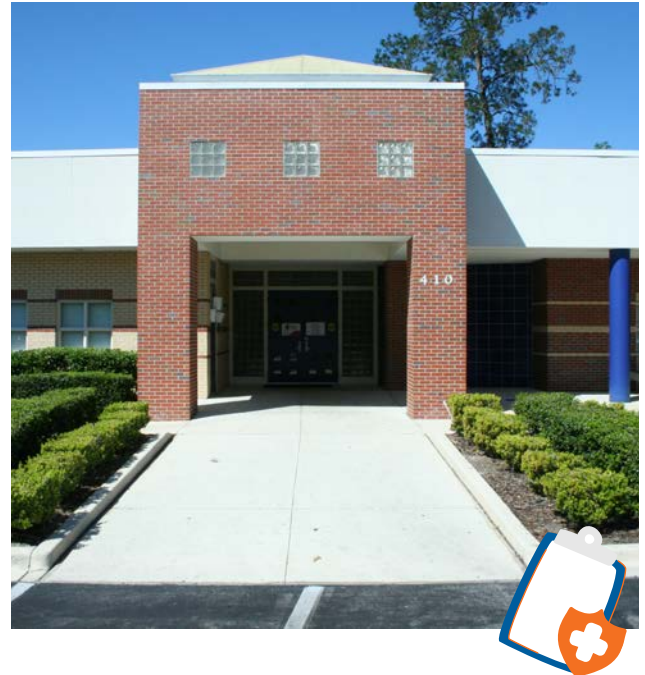
**155,000 PATIENT ENCOUNTERS**  
**9,400 TELEMEDICINE VISITS**



# UF HEALTH FAMILY MEDICINE - EASTSIDE

UF Health Family Medicine - Eastside clinic is a full-service health care resource for all age groups, including pediatric patients. Providers at the Eastside clinic offer their patients a wide range of services including physical check-ups, immunizations, health screenings, treatment for various ailments, health care advice and education, pharmacy assistance programs, and linkage with community resources.

The Braddock Endowment Fund helps eliminate financial barriers to care by providing patients with low-cost prescription vouchers and free public transportation passes. Community Health and Family Medicine will continue to work closely with community partners to help improve the quality of care and resources available in order to better address the needs of East Gainesville.



To provide program or funding support, please visit [giving.UFHealth.org/eastside](https://giving.UFHealth.org/eastside) or call (352) 265-7237.

## FACULTY AND STAFF

**Medical Director** - Elvira Mercado, MD

**Assistant Medical Director** - Kim Nguyen, MD

**ACU Manager** - Tawana Brown

### **Administrative Staff**

- Nancy Asbell (Office Representative)
- Tameka Davis (Financial Counselor)
- Senetta Hunt (Financial Counselor)
- Amanda Sholty (Social Worker)
- Michelle Sterling (Financial Representative)
- Israel Wilcox (Financial Counselor)

### **Physicians and Providers**

- Peter Carek, MD, MS, CAQSM
- Antoinette Evelyn, DNP, APRN, CPNP-PC
- Reathea Felder, APRN
- Brenda McMahon, MD
- Shaunak Mulani, MD
- Omobola Oduntan, MD, MPH
- Jason Powell, PharmD
- Lara Rybak, MD

### **Nursing Staff**

- Yata Armstrong, LPN
- Erica Harris, RN
- Stephanie Seay, LPN
- Deneshia Summers, LPN
- Lisa Whitfield, LPN
- Gerard Williams, LPN

## CONTACT INFORMATION

### **Appointments:**

(352) 265-7015 (18 & older)

(352) 265-7017 (17 & younger)

### **Fax Number:**

(352) 265-7021

### **Clinic Address:**

410 NE Waldo Road  
Gainesville, FL 32641

# UF HEALTH FAMILY MEDICINE - HAILE PLANTATION

UF Health Family Medicine - Haile Plantation clinic provides a wide variety of services for patients ranging from children to elders, including immunizations, treatment of chronic and acute illnesses, minor surgery, gynecology, dermatology, health maintenance, cyrosurgery, and skin care. Some conditions treated include diabetes, high blood pressure, coronary artery disease, osteoporosis, asthma, high cholesterol, and thyroid problems.



## FACULTY AND STAFF

**Medical Director** - Michael McTiernan, MD

**Assistant Medical Director** - Daniel Rubin, MD

**ACU Manager** - Kim Mann

### **Administrative Staff**

- Lisa Bradley (Financial Counselor)
- Heather Davis (Business Assistant)
- Laytoya Harris (Financial Specialist)
- Chad Jones (Financial Specialist)
- Olga Labrador (Financial Counselor)
- Alessandra Tousignant (Financial Counselor)
- Troy Venters (Financial Specialist)
- Katrina Williams (Site Supervisor)

### **Physicians and Providers**

- Stefania Bray, MD, ABIHM
- Philippa Bright, MD
- Danielle Chaplin, APRN
- Angelica Estrella, DNP, APRN
- Lucia Hansen, MD
- Olga Ihnatsenka, MD
- Mitul Jones, MD
- Jennifer Yello, APRN

### **Nursing Staff**

- Yolanda Anderson, LPN
- Katie Goldammer, LPN
- Cathy Hewitt, LPN
- Ashley Land, LPN
- Rochelle Livoni, LPN
- Heather Misinec, LPN
- Jessica Robinson, LPN
- Robyn Shepard, LPN
- Jenesis Waltron, LPN

## CONTACT INFORMATION

### **Appointments:**

(352) 265-0944

### **Fax Number:**

(352) 594-8511

### **Clinic Address:**

2846 SW 87th Way, Suite A  
Gainesville, FL 32608

# UF HEALTH FAMILY MEDICINE - JONESVILLE

UF Health Family Medicine - Jonesville clinic offers comprehensive care to patients ranging from children to elders. The physicians at Jonesville provide a wide variety of services, including treatment of acute and chronic illnesses, minor surgeries including vasectomies, gynecology, dermatology, health maintenance, cryosurgery, colposcopy, skin care, immunizations, and procedures such as placements of IUDs and nexplanons. On site physicians provide preventive health care including gynecological examinations, sports physicals, and routine adult and child physical examinations. Conditions including diabetes mellitus, hypertension, coronary artery disease, osteoarthritis, thyroid issues, asthma, and allergies are also treated.



Physicians at the Jonesville clinic are also happy to serve not only the Gainesville and Jonesville communities, but also surrounding areas such as Newberry, Archer, Williston, Bronson, High Springs, Fort White, Alachua, Lake City, and Ocala.

## FACULTY AND STAFF

**Medical Director** - Alpa Desai, DO

**Assistant Medical Director** - Run Gan, MD

**ACU Manager** - Ashley Pankey

### **Administrative Staff**

- Carol Bramblett (Financial Specialist/Check In)
- Skyler Davis (Financial Counselor)
- Darrell Jackson (Lead Financial Counselor)

### **Physicians**

- Samuel Dickmann, MD
- James Medley, MD

### **Nursing Staff**

- Cynthia Cornish, MA
- Cherie Kirkland, LPN
- Taylor Malloy, LPN
- Elizabeth "Victoria" Paras, LPN

## CONTACT INFORMATION

### **Appointments:**

(352) 265-8670

### **Fax Number:**

(352) 265-8671

### **Clinic Address:**

13611 NW 1 Lane, Suite 200  
Newberry, FL 32669



# UF HEALTH FAMILY MEDICINE - MAIN

UF Health Family Medicine - Main clinic offers general medical care for all age groups, including pediatric patients. The clinic offers multiple screenings, such as those for cancer, heart disease, cholesterol, blood pressure and diabetes. Patients can also receive health maintenance checkups, immunizations, school physicals, general gynecology services, family planning, and menopause care.

## FACULTY AND STAFF

**Medical Director** - John Malaty, MD

**ACU Manager** - Mindy Halbrook

**Residency Program Director** - Maribeth Williams, MD, MS

**Associate Program Directors** - John Malaty, MD and Velyn WU, MD, CAQSM

### **Administrative Staff**

- Debra Brown (Financial Counselor)
- Jon Bryan (Medical Technician)
- Adrianne Byrd (Office Representative)
- Andrea Coram (Site Supervisor)
- Brenda Grant (Office Representative)
- Dorian Johnson (Financial Specialist)
- Rebecca Johnson (Medical Technician)
- Dyan Krahm (Radiology Technician/CMA)
- Vicki Laughlin (Financial Counselor)
- Jonathan Nash (Financial Counselor)
- Kelly O'Neal (Financial Specialist)
- Erin Robertson (Office Representative)
- Cindy Schmeck (Administrative Assistant)
- Kari Wagdy (Financial Counselor)

### **Physicians and Providers**

- David Feller, MD
- Megan LaBuz, MD, CAQSM
- Danielle Nelson, MD, MPH
- Brian Nguyen, PA-C
- John Malaty, MD
- Chris Piszczatoski, PharmD
- George Samraj, MD
- Michael Tudeen, MD
- Maribeth Williams, MD, MS
- Velyn Wu, MD, CAQSM

### **Nursing Staff**

- Mae Borders, LPN
- Cassandra Davis, CMA
- Maelys Galvez, CMA
- Tonia Garver, LPN
- Cavonda Jenkins, LPN
- Amanda Lairson, CMA
- Cindy Lasley, BSN, MS, CHC/RN
- Angela McClellan, LPN
- Brenda McCullough, LPN
- Tammy Morris, CMA
- Brenda McCullough, LPN
- Tammy Morris, CMA
- Gloria Parker, RN

## CONTACT INFORMATION

**Appointments:**  
(352) 265-9593

**Fax Number:**  
(352) 265-9584

**Clinic Address:**  
1707 North Main Street  
Gainesville, FL 32609



# UF HEALTH FAMILY MEDICINE - OLD TOWN

UF Health Family Medicine - Old Town is located in Old Town, FL which is approximately 45 miles west of Gainesville very near the Suwannee River and only miles to the Gulf of Mexico. Physicians at this site provide primary care services to a rural community by offering comprehensive adult and adolescent medical care, treatment for chronic and acute illness, minor surgery, cryosurgery, skin care, geriatric care, pharmacy consultations, diabetic education, and a Coumadin clinic. Old Town also offers an onsite UF Health Pathology Lab draw station that is staffed with a trained phlebotomist for our patients. The primary mission of Community Health and Family Medicine at Old Town is to provide access to high quality, individualized healthcare in a rural health setting. Our practice is focused on earning our patients' trust through providing compassionate, skilled care and education while also empowering our patients to partner with our healthcare team for positive health outcomes.



## FACULTY AND STAFF

**Medical Director** - Jason Konopack, MD, MPH

**Assistant Medical Director** - Greg Westwood, MD, PhD

**ACU Manager** - Karina Quinn

### **Administrative Staff**

- Marie Cappio (Financial Specialist)
- Dawn Devries (Financial Specialist)
- Dara Fowler (Financial Specialist)

### **Physicians/Providers**

- Christina DeRemer, PharmD
- Brian Fitzgerald, MD
- Jonathan G. Harrell, MD
- Robert Hatch, MD, MPH
- Amelie Middlemas, APRN, DPN

### **Nursing Staff**

- Amanda Collins, Phlebotomist UFHPL
- Tiffany Hartsfield, LPN
- Valerie Horton, LPN
- Alisha Huggins, CMA
- Erica Sheppard, CMA
- Cheryl Turner, RN Health Coach
- Angie White, CMA

## CONTACT INFORMATION

### **Appointments:**

(352) 265-8670

### **Fax Number:**

(352) 265-8671

### **Clinic Address:**

13611 NW 1 Lane, Suite 200  
Newberry, FL 32669

# UF HEALTH FAMILY MEDICINE - SPRINGHILL

UF Health Family Medicine - Springhill clinic offers comprehensive care for patients ranging from children to elders. Besides routine and preventive health care, our physicians treat many conditions, including diabetes mellitus, hypertension, and coronary artery disease. Springhill providers also have various areas of special interests, such as women's and men's health, adolescent health, alternative medical treatments, and acupuncture, making it a very diverse and dynamic team. The new four story building houses multiple specialties and services to better care for the Gainesville community. CHFM is excited to offer its patients a state of the art facility that is able to accommodate their medical needs without the burden of having to travel a long distance.



## FACULTY AND STAFF

**Medical Director** - Ku-Lang Chang, MD, FAAFP

**Assistant Medical Director** - Frank Orlando, MD

**ACU Manager** - Austin Sneed

### **Administrative Staff**

- Maria Nunez (Financial Specialist/Referrals)
- Genice Byrd (Financial Counselor)
- Charisse Jackson (Financial Specialist)
- Dallas Williams (Financial Specialist)
- Brenda Warmack (Office Representative)
- Shayne Padgett (Financial Counselor-Lead)

### **Physicians**

- Kristy Smith, MD
- Petra Townsend, MD
- Karyn Governale, MD
- Siegfried Schmidt, MD, PhD
- Helen Hagan, MD
- Maria Lupi, MD

### **Nursing Staff**

- Donna Beverly, LPN
- Alicia Crews, LPN
- Reva High, LPN
- Samantha Eller, LPN
- Tamara Jones, LPN

## CONTACT INFORMATION

### **Appointments:**

(352) 265-9475

### **Fax Number:**

(352) 265-9476

### **Clinic Address:**

4197 NW 86th Terrace  
Gainesville, FL 32606



# UF HEALTH STUDENT HEALTH CARE CENTER

The mission of the Student Health Care Center (SHCC) is to help all students achieve maximum physical and emotional health so they may fully participate in the numerous educational and personal growth opportunities available at UF. The SHCC has been providing care to students since the institution's inception in 1906 and has been in the historic Infirmary Building since 1931. We currently have services available to over 52,000 students. Services are provided in three Primary Care teams, SMAC (Sports Medicine & Acute Care) Clinic, women's clinic, and special clinics (allergy injection clinic, flu shots, and other immunizations).

Additionally we have two satellite clinics- SHCC @ Shands and SHCC @ Santa Fe College. Our physicians and advanced practice clinicians are board-certified and our organization is accredited by the Accreditation Association for Ambulatory Health Care, Inc. Services provided include general medical,

sports medicine & acute care, concussion care, women's health, sexual health, psychiatric services located at the Counseling Wellness Center, LGBTQ+ care, eating disorders, nutrition, and travel services. Telehealth care is available for some medical problems. Physical Therapy services are provided on-site through an agreement with UF Health Physical Therapy. We have on-site Laboratory services, Radiology & ECG services, and a full-service Pharmacy. In partnership with the Alachua County Health Department, free STI screenings are provided for UF students on-site through the GYT (Get Yourself Tested) clinic. Occupational Medicine and Worker's Comp is provided at our SHCC @ Shands clinic for UF employees.



## CONTACT INFORMATION

### Appointments:

(352) 392-1161

### Clinic Address:

3951 NW 48th Terrace, Gainesville, FL 32606

## FACULTY AND STAFF

### SHCC Executive Staff

- **Medical Director** - Ronald Berry, MD
- **Associate Director of Clinical Operations** - Toni Ratliff, BSN, RN, MBA
- **Assistant Director of Fiscal Operations** - Kat Lindsey, MS
- **Program Director Student Health Psychiatry** - Jody Brown, MD
- **Quality Officer** - Louise Okken, RN, CPHQ

### Clinical Administrative Staff

- Sheryl Heinicka, DNP, APRN (APRN Supervisor)
- Maricelly Rodriguez, CCMA (CCMA/HST/Scribe Supervisor)
- Juanita Lewis (Support Staff Supervisor)
- Elisabeth Powell (Nursing Supervisor)

### Administrative Staff

- Mary Flowers (Accounting Manager)
- Kristine Eckis (Billing, Coding, Insurance Manager)
- Jacques Roberts (Central Supply Supervisor)
- Shellayana Warman (Credentials Coordinator)
- Jennifer Hamlin (Clinical Referral Representative)
- Cecilia Luna (Communications Specialist)
- Bob Blanchette (Environmental Svc. Supervisor)
- Steve Kozakoff (IT Manager)
- Brandie Wicks (Payroll and Personnel)
- Kelli Agrawal (Research Project Specialist)

# UF HEALTH STUDENT HEALTHCARE CENTER

## **PRIMARY CARE CLINICS**

### **Orange Team:**

- Ronald Berry, MD
- Ann Grooms, MD
- Abigail Gabriel, APRN
- Susan Nesbit, APRN
- Sandra Topp, APRN
- Malcolm Hickox, PA-C
- Tracie Cox, RN
- Elizabeth Shoemaker, RN
- Pam Holt, CCMA
- Debra VanderReyden, CCMA

### **Sports Medicine and Acute Care:**

- James Clugston, MD, CAQSM
- Katie Edenfield, MD, CAQSM
- Jocelyn Gravlee, MD, CAQSM
- Cheree Padilla, MD, CAQSM
- Matthew Walser, PA-C
- Ari Chiodo, RN
- Karn Fournier, RN
- Precious Williams, CCMA
- Krystal Bright, LPN
- Chari Holder (Fellowship Coordinator)

### **SHCC at Shands:**

- John Trainer, MD
- Sheryl Heinicka, DNP, APRN
- Karen Brennan, RN
- Elizabeth Rose, RN
- Mike Wuerz, RN
- Frances Owen, CCMA

### **Radiology:**

- Monica Towns, RT (Radiology Manager)
- Joyce Golden, RT (Radiologic Technologist)
- Kenya James, RT (Radiologic Technologist)

### **Blue Team:**

- Asim Merchant, MD, CAQSM
- Kristy Freshwater, APRN
- Candace Kuphal, APRN
- Maidelys Rohan, APRN
- Debra Farrar, RN
- Bonnie Reynolds, RN
- Bonnie James, CCMA

### **Women's Clinic:**

- Anita Aviles, APRN
- Jennifer Donelan, APRN
- Nicole Germain, APRN
- Stacy Hall, APRN
- Susan Ryals, APRN
- Jessica Prentiss, RN
- Karen Williams, RN
- Tammy Reno, CCMA

### **SHCC Psychiatry at CWC:**

- Jody Brown, MD
- Hong Chen, MD
- Michelle Jacobs-Elliott, MD
- Laura Mayol-Ginory, MD
- Marcia Morris, MD
- Julie Rodriguez, MD
- Nicole Karcinski, DNP, APRN
- Karen Rye, APRN
- Rizan Yozgat, APRN
- Christine Aydt, RN
- Jeremy Titus, RN
- Monica Cuellar, Case Manager

### **Red Team:**

- Eileen Lauzardo, MD
- Gretchen Lochridge, APRN
- Shannon Whitaker, RN
- Takhia Frazier, CCMA

### **Float Providers/RNs:**

- Cheri Sellers, PA-C

### **Special Clinics:**

- Kelly Mitchell, RN
- Ken Mize, RN
- Stacy Rider, RN

### **Dietician**

- Hannah Stahmer, RDN

### **SHCC at SFC:**

- Katherine Stakely, RN

### **Pharmacy:**

- Laura Tipton, RPh (Manager)
- Donna Smith, PharmD (Pharmacist)
- Patricia Tice, RPh (Pharmacist)
- Valerie Hoffer, RPh (Pharmacist)
- Michelle Fields (Pharmacy Tech)
- Jackie Green (Pharmacy Tech)

### **Laboratory:**

- Tom Lau, MD (Pathologist)
- Terri Wilkinson, MLS-ASCP (Lab Manager)
- Shamon Williams (Lab Technician)
- Rob Stewart, MT (Lab Technician)
- Kathy Williams (Phlebotomist)

# UF HEALTH WOUND CARE AND HYPERBARIC CENTER

The UF Health Wound Care and Hyperbaric Center's modern facility includes four outpatient wound treatment rooms and three monoplace hyperbaric oxygen chambers. Most of the wounds treated are chronic and include diabetic ulcers of the lower extremity, venous leg ulcers, pressure ulcers, arterial ulcers, non-healing surgical injuries, and other wounds. Services include ankle-brachial indices, transcutaneous oxygen testing, debridement, biopsies, wound cultures, dressings to promote moist wound healing, compression wraps, negative pressure wound therapy, total contact casting, advanced tissue therapies, and Xpansion skin grafting.



In the outpatient setting, hyperbaric oxygen therapy is most commonly used to treat delayed radiation injury, diabetic foot ulcers with osteomyelitis or gangrene, chronic and refractory osteomyelitis, compromised skin grafts and flaps, and necrotizing soft tissue infections. The center focuses on a case management model and closely monitors patient outcomes. As a result, the UF Health Wound Care and Hyperbaric Center was presented with the 2016 and 2019 Center of Distinction Award and the 2017 and 2018 Robert A. Warriner, III Center of Excellence by Healogics.

## FACULTY AND STAFF

**Program Director** - Richard Woodall, BS

**Medical Director** - Susan Millan, MD, FAAFP, FAPWHc

**Clinical Nurse Manager** - Julie Smith, MSN, RN, PCCN

**Office Coordinator** - Stephanie Dorsey, FOC

### **Physicians and Providers**

- Run Gan, MD, FAPWHc
- Petra Townsend, MD, FAPWHc

### **Hyperbaric Technicians**

- Catherine Hontz, RRT, CHT, BHCM, HSD
- James Swartz, RRT

### **Nursing Staff**

- Tracy Blair, RN
- Laura Lee, BSN, RN, RN-BC
- Michelle Whitten, BSN, RN, RN-BC

## CONTACT INFORMATION

### **Appointments:**

(352) 265-4450

### **Fax Number:**

(352) 265-4404

### **Clinic Address:**

3951 NW 48th Terrace  
Gainesville, FL 32606



# MEDICAL STUDENT EDUCATION PROGRAM



The Department of Community Health and Family Medicine plays a significant role in medical student education by maintaining a key leadership position in educational policy within the University of Florida College of Medicine. Medical students rotate throughout our clinics each semester. UF Health Family Medicine – Main also hosts 27 residents every year as part of the Family Medicine Residency Program.



## Medical Students

- ✓ Eastside
- ✓ Haile
- ✓ Jonesville
- ✓ Main
- ✓ Old Town
- ✓ Springhill
- ✓ Student Health Care Center

## Residents

- ✓ Eastside
- ✓ Main
- ✓ Student Health Care Center

## Fellows

- ✓ Main
- ✓ Student Health Care Center

## EDUCATIONAL LEADERSHIP



CHFM is proud to have several educational leaders. The following faculty members have played an integral part in the college's efforts to renovate the medical school curriculum.



**Daniel Rubin, MD**, has served in numerous diverse capacities regarding medical education including Course Director (Introduction to Clinical Practice), Community Health and Geriatrics Assistant Clerkship Director, Collaborative Small Group leader, and member of the College of Medicine's Curriculum Committee.

**“As a former graduate from UF College of Medicine, I am committed to helping students receive the best possible medical education in the same nurturing learning environment that I was afforded, while providing positive experiences and understanding of primary care's role in patient well being.”**



**Jason Konopack, MD, MPH**, is the Preceptorship Director and Medical Director for UF Health Family Medicine - Old Town.

**“My mission is to build on the prior successes the Course has seen over the decades, and find innovative ways for medical students to have structured, real-world clinical experience very early on in their education, in a way that is highly rewarding and enriching for patients, learners, and teachers.”**

## TEACHING AWARDS

Congratulations to the 2018-19 UF College of Medicine Exemplary Teacher Award recipients!



**David Feller, MD**



**John Malaty, MD**



**Jocelyn Gravlee, MD, CAQSM**



**Daniel Rubin, MD**



**Helen Hagan, MD**



**Kristy Smith, MD**



**Grant Harrell, MD**



**Lauren Solberg, JD, MTS**

Congratulations to the 2018-2019 CHFM Golden Gator Teaching Award recipients!



**Samuel Dickmann, MD**



**Jason Konopack, MD, MPH**



**Nicholas Dorsey, MD**



**Maribeth Williams, MD, MS**

# REQUIRED MEDICAL STUDENT COURSES



The following required courses featured instruction by faculty members in CHFM:

- Discovery, Research, and Health (First Year)
- Family Medicine Sub-Internship (Fourth Year)
- Family Medicine and Ambulatory Care Clerkship (Third Year)
- Foundations of Medicine (First Year)
- Genetics and Health (First Year)
- Geriatrics Clerkship (Fourth Year)
- Health Outcomes and Policy 1 (First Year)
- Hematology (Second Year)
- Introduction to Cancer Biology and Clinical Oncology (First Year)
- Introduction to Clinical Medicine 1-4 (First and Second Year)
- Pain and Addiction Intensive (First Year)
- Pediatrics Clerkship (Third Year)
- Psychiatry Clerkship (Third Year)

## PRECEPTORSHIP SERIES

**Jason Konopack, MD, MPH** is the Course Director of the popular preceptorship series which is consistently rated as one of the highlights of the medical students first two years. Students report a higher degree of confidence upon entering third-year clerkships after completing the course. The course integrates a spectrum of topics related to community health in its lecture series. It remains one of the best intensive opportunities for students to be exposed to positive family medicine role models early in their education.

# COURSE DIRECTORS AND MANAGERS



**William Allen, JD, MDiv**

Course Director

- Ethics in Genetics
- Discovery, Research, and Health
- Advanced Issues in Medical Ethics and Law
- Clinical Research
- Financial Aspects



**Ray Mosley, PhD**

Course Director

Financial, Business, and Health  
System Aspects of Medicine



**David Feller, MD**

Course Director

Family Medicine Sub-Internship  
(Externship)



**Lauren Solberg, JD, MTS**

Course Director

- Law and Ethics of Aging
- Career Pathways for Research Professionals



**Jocelyn Gravlee, MD CAQSM**

Course Director

Common and Advanced Procedures



**Lea Crowley, MEd**

Academic Assistant I

Assistant for all courses in the Bioethics,  
Law, Medical Professionalism Program,  
and Preceptorship Program



**Robert Hatch, MD, MPH**

Course Director

Family Medicine and Ambulatory Care  
Clerkship Director



**Jessica Highland**

Academic Assistant II

- Family Medicine and Ambulatory  
Care Clerkship
- Preceptorship



**Jason Konopack, MD, MPH**

Course Director

Family Medicine Preceptorship Director



**Loretha Miller**

Academic Assistant I

Assistant to the Clerkship and  
Preceptorship Programs



**John Malaty, MD**

Course Director

Resident as Teacher Program



## PROGRAM FACULTY

Lauren Solberg, JD, MTS, Director; William Allen, JD, MDiv; Ray Moseley, PhD

## EDUCATION

The Bioethics, Law and Medical Professionalism (BLMP) faculty provide the majority of bioethics education for medical students through the Clinical Ethics, Law, and Professionalism thread. Through lectures and regular small group sessions with Collaborative Learning Groups (CLGs) during the first and second years of medical school, ethics case conferences in the Family Medicine, Geriatrics, Pediatrics, and Psychiatry clerkships in the third and fourth years of medical school, the curriculum teaches students how to identify, analyze, and discuss ethical issues they will encounter as physicians. Additionally, an important part of the first year medical school curriculum is Professor William Allen's required course offered each Fall, called Discovery, Research and Health, where students learn about research ethics. Each BLMP faculty member offers additional educational opportunities for medical students through electives taught in the third and fourth year of medical school, as well as other learners through courses taught to undergraduate and graduate students, students in other health professions, residents and fellows, faculty, and community providers. Of note, in 2019-2020, the BLMP faculty continued leading small-group discussions on end-of-life care, informed consent, and confidentiality with the Community Health and Family Medicine residents.

In Spring 2020 the BLMP program added three important elements to the medical student curriculum. For the first time, the BLMP faculty led CLG sessions with third year medical students about the role of ethics consultation and other non-clinical services (such as social work and pastoral care) in the clinical setting. These sessions will be incorporated into the 2020-2021 academic year curriculum. In preparation for their rise to the third year of medical school, the BLMP faculty held a session called Ethics Pearls for the Third Year. Finally, in response to the COVID-19 pandemic, BLMP developed and taught CLG sessions for the first year medical students to learn about and discuss ethical issues that physicians and other health care professionals are facing during the COVID-19 pandemic.

The COVID-19 pandemic resulted in additional educational offerings and opportunities for medical students beyond the CLG sessions. Additionally, in Spring 2020 the UF College of Medicine had a need for elective courses offered in a remote learning format when, due to COVID-19, medical students were unable to continue with their clerkships in a clinical setting. BLMP electives – Advanced Issues in Medical Ethics and Law; Religion, Culture, and Medicine; History of Medicine; and Financial, Business, and Health Systems Aspects of Medicine – were offered every 2 weeks between the end of March and beginning of July 2020, increasing the number of elective courses taught from 4 (as was anticipated) to 17 during the 2019-2020 academic year.

Another important part of the curriculum that BLMP offers to medical students is the Medical Ethics and Law track in the University of Florida College of Medicine Discovery Pathways program. The curriculum is designed to provide students with a more in-depth look at legal and ethical issues in patient care and/or research. This Discovery Pathway also requires students to complete an extended research project related to bioethical issues under the guidance of a BLMP faculty mentor.



# BLMP PROGRAM

## ADDITIONAL FACULTY TEACHING HIGHLIGHTS

Professor William Allen co-directed and taught senior medical student electives with Dr. Ray Moseley "Advanced Issues in Medical Ethics and Law," "Financial, Business, and Health Systems Aspects of Medicine," and "History of Medicine." He also taught an elective titled "Religion, Culture, and Medicine." In order to assist the College of Medicine with shifting its curriculum online, these electives were offered for six extra iterations this year. In the fall semester, Professor Allen co-directed the Ethics in Genetics graduate course. During the spring, Professor Allen directed and taught an Ethical/Policy Issues in Clinical Research elective for UF graduate students. He also presented lectures to pharmacy students throughout their required Law and Ethics thread. Dr. Ray Moseley co-directed and taught senior medical student electives with Professor Allen titled "Advanced Issues in Medical Ethics and Law," "Financial, Business, and Health Systems Aspects of Medicine," and "History of Medicine." These electives were offered for six extra iterations this year. Dr. Moseley also led ethics discussions as a part of Dr. Novak's COVID-19 elective. He also continued to serve in his role with the IRB guiding research teams through the IRB application and review process. He presented ethics material to high-achieving high school students enrolled in the Student Science Training Program (SSTP), a seven week research camp hosted by the UF Center for Precollegiate Education and Training. Throughout the year, Dr. Moseley facilitated monthly ethics workshops for internal medicine residents and taught small group sessions of the Putting Families First: Interdisciplinary Family Health course. He also continued working with two students on research projects for the Medical Student Research Program (MSRP), and one other independent research project from Summer 2019. In April 2020, Dr. Moseley was invited to serve on a new COVID-19 Scientific Review Committee and Peer Assistance Working Group, a group meeting twice weekly to review new research protocols on COVID-19.

Professor Lauren Solberg completed a Women in Leadership certificate through Cornell University. This program was made possible through her receipt of a Faculty Enhancement Opportunity grant in Spring 2019. Professor Solberg taught a newly expanded curriculum of her "Career Pathways for Research Professionals" class in Fall 2019. In addition to teaching this new course, she also developed a curriculum for and taught a new undergraduate course for the Medical Honors Program students titled "Physician Perspectives on Local Topics in Healthcare" in Spring 2020. She was selected for and inducted into the UF College of Medicine Society of Teaching Scholars in Spring 2020. Professor Solberg also continued mentoring a MSRP student from Summer 2019.

## SERVICE

BLMP program faculty comprise the core team of ethics consultants for UF Health. The UF Health ethics consult service is a free service offered to patients, family members, and healthcare professionals with ethical concerns about making medical decisions. The consultant on call may work independently or with other team members to navigate issues such as treatment plan conflicts, informed consent, social worker proxies, decisional capacity, advance directives, and end-of-life care issues.

Professor Solberg was elected to serve on the UF Faculty Senate Budget Council; the 2019-2020 academic year was her first year of a three-year term. The 2019-2020 academic year was also Professor Solberg's final year of her second term on the UF Faculty Senate, which she has served on for the past six years. This year, Professor Solberg was also named to the newly formed UF COM Medical Honors Program Executive Committee.

# FAMILY MEDICINE RESIDENTS



## GRADUATING CLASS OF 2020



**Ashkan Alkhamisi, MD**  
Sports Medicine Fellowship  
Detroit, MI



**Steven Faulks, MD**  
Family Medicine  
Hendersonville, TN



**Joshua Gunpat, MD**  
Family Medicine  
Hyattsville, MD



**Thomas Lotina, MD**  
Hospitalist  
Lake City, FL



**Mruga Nanavati, MD**  
Palliative Care Fellowship  
Los Angeles, CA



**Stephen Saenz, MD**  
Sports Medicine Fellowship  
San Antonio, TX



**Kiersten Swayne, MD**  
Hospitalist  
Charlotte, NC

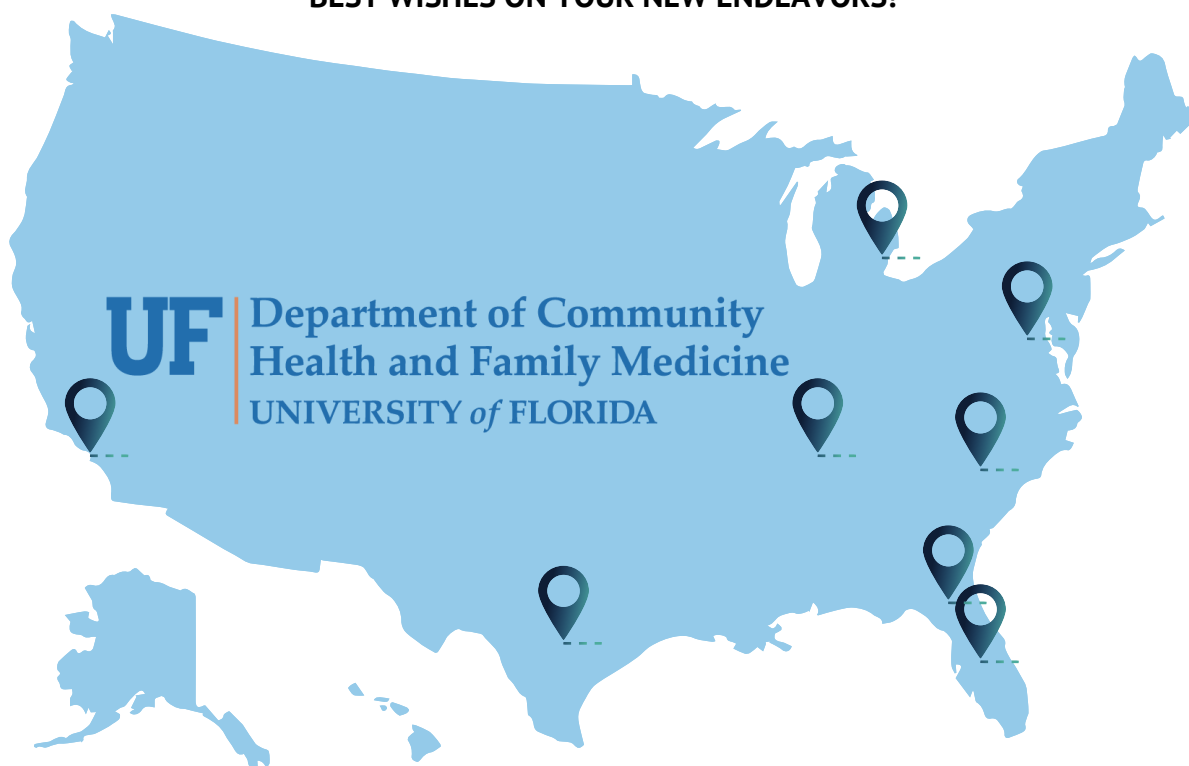


**Krishna White, MD**  
Sports Medicine Fellowship  
Orlando, FL



**Ming-Jim Yang, MD**  
Hospitalist  
Lake City, FL

**BEST WISHES ON YOUR NEW ENDEAVORS!**



# FAMILY MEDICINE RESIDENTS

## CLASS OF 2021



**Kelcie Brown, MD**  
Loma Linda University



**Rachael Hager, MD**  
Marshall University



**Hunter Haley, MD**  
University of Alabama



**Thanh-Tam Le, MD**  
University of North Carolina  
at Chapel Hill



**Anne Littell, DO**  
Lake Erie College of  
Osteopathic Medicine



**Andrew Miller, MD**  
Florida International University



**Chirag Panchal, DO**  
Philadelphia College of  
Osteopathic Medicine



**Eric Pettyjohn, MD**  
West Virginia University



**Inocente Santiago III, MD**  
University of Florida

## CLASS OF 2022



**Vanessa Billingsley, MD**  
University of Florida



**Carl Brophy, MD**  
Georgetown University



**Pooja Jayaprakash, MD**  
USF Health Morsani



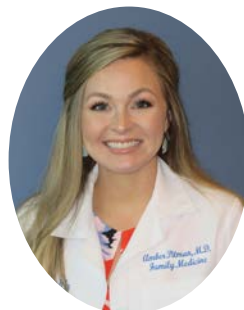
**Brendan Koistinen, DO**  
Arizona College of  
Osteopathic Medicine



**Christopher Lee, MD**  
Texas Tech University - Amarillo



**Cody Phillips, MD**  
Mercer University



**Amber Pitman, MD**  
Florida State University



**Lindy Williams, MD**  
Wake Forest



## PROGRAM PROFILE

The University of Florida has a history of outstanding athletics and a reputation for excellence in medicine. The UF Sports Medicine Fellowship combines elements of both to create an outstanding educational experience for the sports medicine fellow. This ACGME accredited fellowship adds to CHFM's long legacy of excellence in education.

Established in 2007, the program's goal is to produce excellent primary care sports medicine physicians equipped for a lifetime of learning who are prepared for a successful and fulfilling career in sports medicine. The program is currently directed by Jay Clugston MD, MS, CAQSM, FAMSSM and is housed within the Student Health Care Center.

The 12 month curriculum offers abundant exposure to athletic teams and events at the University of Florida and greater North Florida area. Most learning activities take place at the Student Health Care Center, Orthopedics and Sports Medicine Institute and the University of Florida Athletic Association's facilities on the UF campus. The fellowship program accepts up to three fellows each year and is open to applicants trained in family medicine, physical medicine and rehabilitation, internal medicine, emergency medicine, and pediatrics. Applicants residency training must also be from an ACGME-accredited residency program.

## SPORTS MEDICINE GRADUATES

Our 2019-20 graduates are doing well in their new chapter in life. Dr. Gary Allen is working with Sacred Heart in Pensacola, Florida, Dr. Josh Altman is working with UF Health in the Emergency Department and Orthopedic Sports Medicine Institute, and Dr. Nicole Pitts is working with Care Spot throughout the State of Florida while living in Boca Raton.



**Gary Allen, MD**



**Josh Altman, MD**



**Nicole Pitts, MD**





## EQUAL ACCESS CLINIC

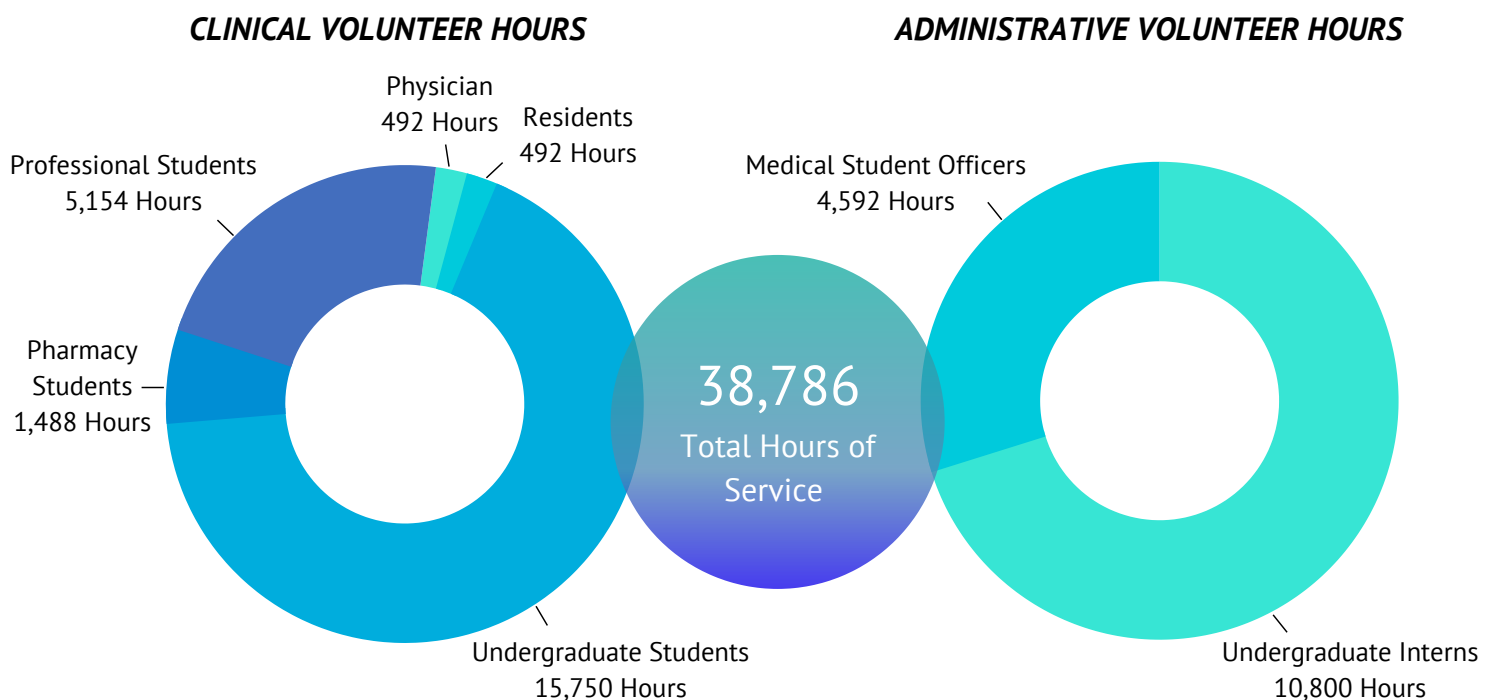
The Equal Access Clinic (EAC) was established by a group of medical students in 1992 at a local Salvation Army facility. Soon thereafter, the University of Florida granted the EAC use of a Family Practice facility here in Gainesville. Since then, the EAC has continued to expand under the oversight of David Feller, MD and now includes four primary care clinic sites. The EAC also includes an increasing number of specialty care clinics including pediatrics, "Spanish Night," LGBTQ+ health, women's health, psychology, dental, radiology, ophthalmology, physical and occupational therapy, among others.

Our broad spectrum of primary and specialty services allows us to offer team-oriented and comprehensive health care to all of our patients at no cost. Many patients rely on the clinic for any and all health care. The EAC has fluidly adjusted to the challenges imposed by the COVID-19 pandemic to keep both our patients and volunteers safe.

## NETWORK HIGHLIGHTS

Despite limited in-person encounters due to COVID-19, we have conducted over 1,700 patient visits network-wide in the past year. Some notable numbers from these visits include:

- 240 HIV Tests administered
- 1,100 patients counseled on smoking cessation
- 14 patients screened for colorectal cancer using a non-invasive FIT test
- Nearly 100 dental procedures completed
- Approximately 400 patients treated at our PT clinic



By providing free, multi-disciplinary patient care, the EAC network has bolstered the health of our community and reduced the financial strain on our patients as well as local Emergency Departments. Our estimated value of care for the past fiscal year totals over **\$101,000**.

In the current climate, access to health care for all populations is imperative. In these unprecedented times, we continue to devise new ways to offer a holistic and compassionate approach to each individual patient we've seen. Telemedicine visits (not included in the above statistics) have increased in number and efficiency allowing the EAC to manage patients' chronic conditions with minimal exposure risk.

In addition to finding new ways to operate, the EAC has continued to grow. This past year, the clinic has added a cardiology night to help our patients with complex cardiological comorbidities and an UberHealth service to address transportation barriers. We revamped our referral system to enhance patient continuity of care. Patient volume at each primary clinic has increased by approximately **30%**. The EAC now offers IUD placements at the Women's Night clinics, and is in the process of making our Eastside clinic site an HIV rapid-test site. Overall, the Equal Access Clinic remains committed to providing an increasing number of health care services to our community.

## 2020-21 EQUAL ACCESS CLINIC GOALS

- Increase clinic volume and efficiency by an additional **20%** at all clinic sites
- Open two new specialty clinics (Rheumatology and Pediatric Ophthalmology)
- Transfer our Electronic Medical Record (EMR) over to Epic to better integrate with UF Health and Shands

The EAC is eager to enter the new fiscal year with new goals that meet the needs of the current public health climate and the general patient population as they maintain the Equal Access Clinic mission: to provide quality, comprehensive healthcare for all.

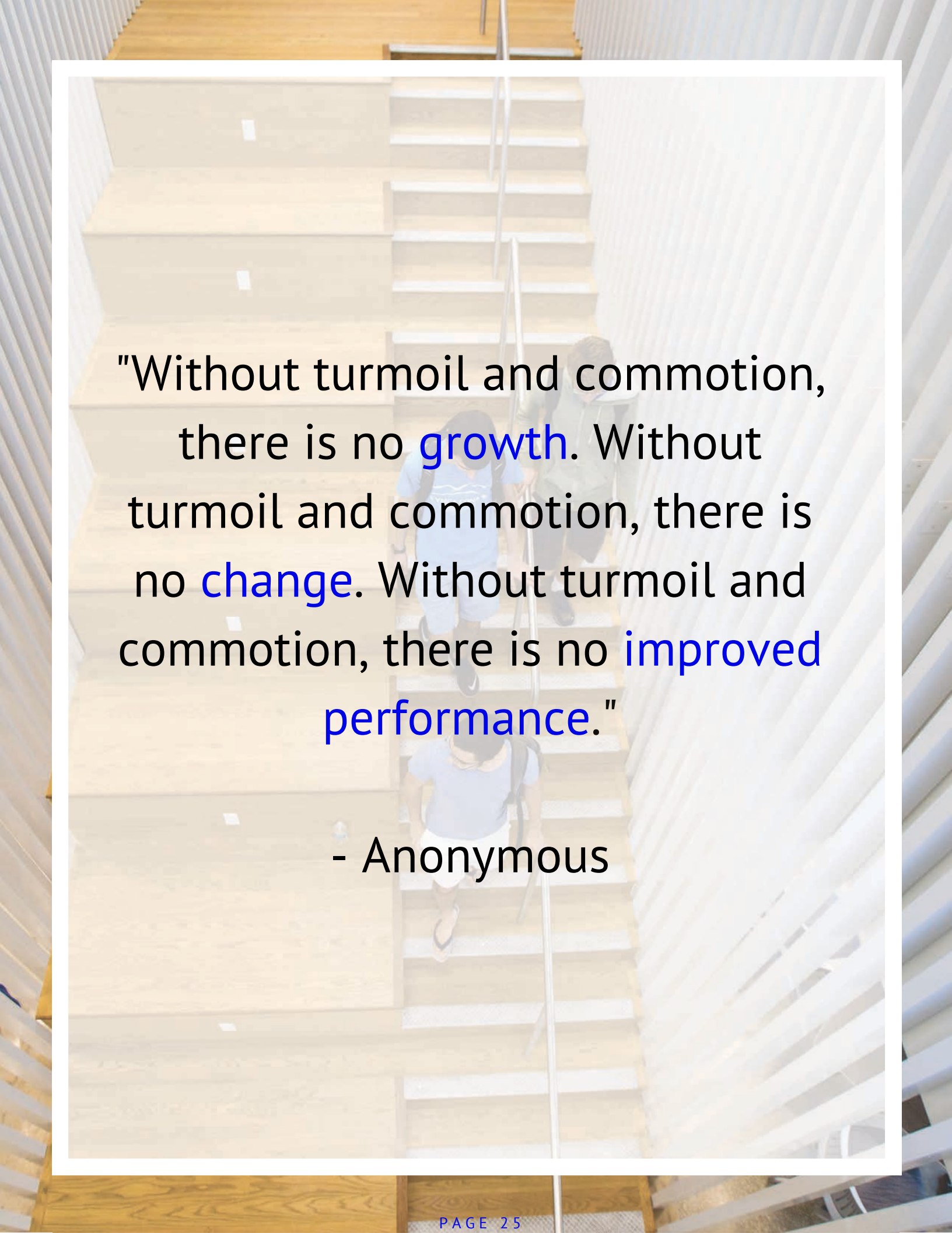
## MOBILE OUTREACH CLINIC

The Mobile Outreach Clinic (MOC) was established in 2010 in response to a growing recognition that many underserved patients in Gainesville were unable to access medical care due numerous socio-economic barriers, especially transportation. The clinic strategically locates itself in Gainesville neighborhoods and common areas with high concentrations of uninsured and under-insured residents as well as those experiencing substantial health disparities. The clinic is staffed daily by a clinic nurse, Trinity Cromwell; two APRNs, Michelle Nall and Sandy Frost; and a team of volunteer PAs and MDs who provide comprehensive primary care services. The providers rotate on a recurring schedule at the same site in order to ensure high levels of

continuity. Additionally, the MOC utilizes the skills of approximately 50 undergraduate volunteer Care Coordinators who help with day-to-day operations as well as off-site phone based follow-up with patients to help ensure follow through with care plans. The MOC also hosts a robust educational program for medical, pharmacy and PA students of all levels. During their rotations these students learn how to provide care in settings where social determinants of health play a disproportionately high role in health outcomes. Graduate education is facilitated on the bus through partnerships with College of Pharmacy PGY-1 residents as well as residents within the departments of Community Health and Family Medicine, Internal Medicine, and Pediatrics. Finally, we also provide space and support to the Monday and Wednesday night Equal Access Clinic at Anthem church and Bartley Temple.



This past year was challenging for a number of reasons, but still an overwhelming success. The bus experienced a mechanical failure while on the road and crashed, leading to significant body damage. Despite this huge setback, only one day of clinic was missed as the team quickly established new clinic sites at Highlands Presbyterian Church and Gainesville Community Ministry. These partnerships have soared over the past 10 months and clinical operations did not drop. The other setback was of course the COVID-19 pandemic which has impacted the entire clinical enterprise of UF Health. However, the MOC once again seamlessly adopted new clinical operations and strategies to accommodate the new environment. In the course of one week we switched almost our entire operation to Telemedicine including both our clinical care and our care coordination program. In the final three weeks of March, the MOC conducted approximately 180 telemedicine visits and continued to integrate these visits into our operation. Despite these challenges we still managed to conduct 2,538 primary care visits, 34 ultrasound visits, and 60 specialty visits. In addition to our clinical operations, MOC played a major role in the public health response for underserved populations facing COVID-19. The Mobile Outreach Clinic helped coordinate large scale and intermittent smaller scale testing at GRACE Marketplace starting in April and occurring every month up until the present time. We have also administered the testing of residents and staff at Peaceful Paths and St. Francis House. We have coordinated and staffed the medical quarantine of 10 COVID-19 positive homeless individuals on behalf of the Alachua County Community Support Services and also established street medicine outreach teams to serve the medical and social needs of unsheltered homeless individuals throughout the county. To date, we have tested close to 2,000 underserved individuals through partnerships with UF and the Alachua Department of Health and have provided almost 250 hours of medical care and resource distribution to unsheltered homeless individuals.



"Without turmoil and commotion,  
there is no **growth**. Without  
turmoil and commotion, there is  
no **change**. Without turmoil and  
commotion, there is no **improved  
performance**."

- Anonymous



# AWARDS AND ACHIEVEMENTS



## NATIONAL AWARDS



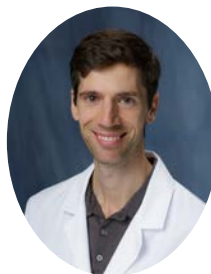
**William Allen, JD, MDiv**

Trustee of the Baptist  
Theological Union



**Jay Clugston, MD, CAQSM**

Named Fellow of the  
American Medical Society  
for Sports Medicine



**Jonathan G. Harrell, MD**

American Medical  
Association (AMA) Health  
Systems Science Scholar



**UF Health Wound Care  
and Hyperbaric Center**

2019 Healogics Center of  
Distinction Award

## STATE/LOCAL AWARDS



**Brenda McMahon, MD**

UF Health Shands Hospital  
Customer Service is Key  
Award



**Omobola Oduntan, MD**

UF Health Shands Hospital  
Customer Service is Key  
Award



**Arch Mainous, III, PhD**

Elected to the Academy of  
Science, Engineering and  
Medicine of Florida

## UNIVERSITY AWARDS



**Tawana Brown**

Superior Accomplishment  
Award, Division 2



**Samuel Dickmann, MD**

President of the College of  
Medicine Gold Humanism  
Honor Society Faculty Board



**David Feller, MD**

2019 College of Medicine  
Clinical Science Teacher of  
the Year Award

# AWARDS AND ACHIEVEMENTS

## UNIVERSITY AWARDS, CONT.



**Robert Hatch, MD, MPH**

2019-20 College of  
Medicine's University Term  
Professor



**Beverly Dede, PhD**

- 2019 First Generation Champions Award
- 2019 Exceptional Contributions Award

## RESIDENT AWARDS



**Ashkan Alkhamisi, MD**

Association of Family  
Medicine Residency Doctors  
(AFMRD) Resident Award for  
Scholarships



**Thomas Lotina, MD**

Resident of the Year



**Lindy Williams, MD**

Sey Hee Park Spirit of  
Medicine Award



**Ming-Jim Yang, MD**

- Outstanding Community Service Award
- STFM Resident Teacher Award
- Society of Teaching Scholars Outstanding Resident Educator Award



## 2019-20 GRANT ACTIVITY

### **AHEC Tobacco Training and Cessation Program. Florida Department of Health**

Funded by: Area Health Education Centers (AHEC)

Peter Carek, MD, MS, CAQSM

Total grant: \$2,150.00

Dr. Carek has received support from AHEC to coordinate and deliver tobacco cessation services.

### **Bio-behavioral Mechanisms Underlying Symptoms and Healing Outcomes in Older Individuals with CVLU**

Funded by: National Institutes of Health

Susan Millan, MD

Total grant: \$47,378.00

Dr. Millan is a co-investigator in an NIH-funded project examining the healing outcomes of older individuals with chronic venous leg ulcers.

### **Developing a VCTE-based Screening Model for Patients with Type 2 Diabetes and Advanced Fibrosis**

Funded by: National Institutes of Health

John Malaty, MD; Siegfried Schmidt, MD, PhD; George Samraj, MD

Total grant: \$16,654.67

Several CHFM faculty are participating as Co-Investigators on an NIH research grant examining the role of screening and early intervention in primary care with low-dose anti-diabetic medications for patients with Type-2 diabetes and non-alcoholic fatty liver disease.

### **All of Us Research Program**

Funded by: National Institutes of Health

Ku-Lang Chang, MD, FAAFP; Maria Elisa Lupi, MD; Frank Orlando, MD; Siegfried Schmidt, MD, PhD

Total grant: \$41,317.13

Several CHFM faculty are participating as Co-Investigators on the All of Us Research Program. All of Us is an NIH-sponsored program with the goal to advance the role of precision medicine in guiding healthcare decisions.

### **Sparkling Advancements in Genomic Medicine (IGNITE II)**

Funded by: National Institutes of Health

Siegfried Schmidt, MD, PhD

Total grant: \$14,312.13

Dr. Schmidt is participating as a co-investigator on the NIH-sponsored IGNITE II project. This is a research study dedicated to supporting the implementation of genomics in health care.

# GRANTS AND RESEARCH

## **Patient Empowered Strategy to Reduce Asthma Morbidity in Highly Impacted Populations**

Funded by: American Academy of Family Physicians (AAFP)

Ku-Lang Chang, MD, FAAFP

Total grant: \$123,020.00

A study organized by the American Academy of Family Physicians to test whether a novel usage of existing corticosteroid inhalers improves the management of asthma. Dr. Chang is in the fourth year of this five-year study.

## **Community Health Offering Innovative Care and Educational Services (CHOICES) Agreement**

Funded by: Alachua County Board of County Commissioner

Jonathan G. Harrell, MD

Total grant: \$81,853.00

CHOICES is a competitive health services grant program offered by the Alachua County Board of County Commissioners, designed to assist uninsured residents by providing grant funding to health care providers to ensure the provision of quality health care services. Dr. Harrell received this award to support the operation of the UF Mobile Outreach clinic.

## **Bridging the Gap: Linked Patients to Quality Care**

Funded by: Florida Association of Free and Charitable Clinics (FAFCC)

Jonathan G. Harrell, MD

Total grant: \$71,000.00

FAFCC is a not-for-profit organization which funds the efforts of community-based and faith-based organizations that provide healthcare services at little or no charge to low-income uninsured and underserved individuals, while relying heavily on volunteer healthcare professionals and community partnerships. Dr. Harrell received an award from the FAFCC for the continued support that Mobile Outreach Clinic provides to our community.

## **Feasibility Study for a Nursing Fellowship Program**

Funded by: Florida Blue Foundation

Arch Mainous, III, PhD

Total grant: \$250,000.00

The Florida Blue Center for Health Care Quality, housed in the College of Nursing and College of Public Health and Health Professions at the University of Florida, received grant funding from the Florida Blue Foundation to support an 18-month planning study to determine the feasibility, potential market, potential partners, competition and best practices for a Nurse Fellowship Program in Florida.





## STAFF SERVICES AND MEMBERSHIPS

**Art Watson, MS**

### State/Local

- Webmaster and Audio/Visual support for North Central Florida Chapter, American Academy of Professional Coders (AAPC)
- Primary Care Innovations Conference Planning Committee, IT and Audio/Visual support

**Chase Buchanan**

### State/Local

- Member, University Hearing Authority 2nd Level Appeals Committee, Transportation and Parking Services, University of Florida

**Jon Coffey**

### National

- Chair, Administrator's Steering Committee, Association of Departments of Family Medicine (ADFM)
- Member, Leadership Development Committee, Association of Departments of Family Medicine (ADFM)

**Lavina Gramig**

### State/Local

- Member, University Hearing Authority 2nd Level Appeals Committee, Transportation and Parking Services, University of Florida

**Lea Crowley**

### State/Local

- Wellness Partner, UF and UF Health Wellness Committee

**Najwa Liscombe, BHSA, CPC, CPC-I, CMA**

### National

- Member, The American Health Information Management Association (AHIMA)
- Member, National Alliance of Medical Auditing Specialist (NAMAS)
- Speaker Panel, American Academy of Professional Coders Chapter Association (AAPCCA)
- Executive Board of Directors, American Academy of Professional Coders Chapter Association (AAPCCA)
- Member, Legal/Ethics Issues Committee, American Academy of Professional Coders Chapter Association (AAPCCA)
- Treasurer, Vinson Foundation – Non-profit for after-care counseling of family and friends of suicide victims

### State/Local

- President of the Gainesville Deanery of the Council of Catholic Women
- President of the Council of Catholic Women, Gainesville Affiliate
- Parish Council, St. Patrick Catholic Church
- Medicare FCSO Subcommittee on Evaluation and Management Education
- Treasurer, North Central Florida Chapter of the American Academy of Professional Coders (NCF-AAPC)
- Co-Coordinator, 2020 Coding Fiesta Committee, NCF-AAPC
- Bereavement Committee, St. Patrick Catholic Church
- St. Vincent De Paul Committee, St. Patrick Catholic Church
- Volunteer, No One Dies Alone, UF Health

**Sheila Diuguid**

### State/Local

- Departmental Representative, UF Campaign for Charities

# ADMINISTRATIVE SERVICES AND MEMBERSHIPS

## FACULTY SERVICES AND MEMBERSHIPS

**William Allen, JD, MDiv**

### National

- Member, Academy for Professionalism in Healthcare
- Member, American Society for Bioethics and Humanities

### State/Local

- Member, Admissions Committee, College of Medicine, University of Florida
- Consultant, Ethics Consult Service, UF Health Shands Hospital
- Member, Florida Bioethics Network
- Member, Shands Teaching Hospital Ethics Committee, UF Health Shands Hospital
- Member, Board of Directors, Center for Government Responsibility (CGR), Levin College of Law, University of Florida
- Member, Genetics Institute Executive Committee, University of Florida
- Ex Officio Member, Academic Status Committee, College of Medicine, University of Florida

**Peter J. Carek, MD, MS, CAQSM**

### National

- Co-chair, Group on Research in Residency Program, Society of Teachers of Family Medicine (STFM)
- Member, Executive Committee, I3 Collaborative
- Member, Finance Committee, Association of Departments of Family Medicine
- Member, Program Committee, Society of Teachers of Family Medicine
- Member, Appeals Panel, Family Medicine, Accreditation Council for Graduate Medicine Education (ACGME)
- Member-at-large, Board of Directors, Association of Departments of Family Medicine

### State/Local

- Member, Residency Director's Council, Florida Academy of Family Physicians
- Member, Advisory Committee, Florida Blue Center for Health Care Quality
- Member, Family Medicine Department, Florida Academy of Family Physicians
- Chair, Department of Community Health and Family Medicine, College of Medicine, University of Florida
- Chief, Family Medicine, UF Health Shands Hospital
- Member, Medical Staff Quality and Operations Committee, UF Health Shands Hospital
- Member, Executive Committee, College of Medicine, University of Florida
- Member, Board of Directors, Florida Clinical Practice Association, Inc
- Member, After Hours Primary Care Working Group, College of Medicine, University of Florida
- Member, Managed Care Strategy Committee, UF Health Physicians
- Member, Implementation Science Operations Committee, College of Medicine, University of Florida
- Member, OneFlorida Steering Committee, University of Florida
- Member, Educational Awards Committee, College of Medicine, University of Florida
- Member, Research Leadership Group, College of Medicine, University of Florida
- Member, Educational Incentive Committee, College of Medicine, University of Florida
- Member, Junior Honors Medical Program Advisory Committee, College of Medicine, University of Florida
- Member, Capital Review Advisory Committee, UF Health, University of Florida
- Member, Clinical Information Technology Steering Committee, University of Florida
- Mentor, University Minority Mentor Program, University of Florida
- Member, Steering Committee, OneFlorida Clinical Research Consortium
- Chair, CTSI Translational Pilot Program Steering Committee, University of Florida
- Member, Patient Satisfaction Steering Committee, University of Florida Physicians
- Member, Public Health Advisory Committee, College of Public Health and Professions, University of Florida
- Chair, Readmission Steering Committee, Chairs' Quality Innovation Initiative, UF Health, University of Florida

# ADMINISTRATIVE SERVICES AND MEMBERSHIPS

- Chair, Audit/Compliance Committee, Florida Clinical Practice Association, Inc
- Member, Search Committee, Department of Epidemiology, Colleges of Medicine and Public Health Professions, University of Florida
- Member, Physicians Marion County Planning Group, UF Health

## **Jay R. Clugston, MD, CAQSM**

### **National**

- Member, Presidential Task Force Curriculum Subcommittee, American Medical Society for Sports Medicine
- Organizer, National Football League, National Collegiate Athletic Association, Football Health and Safety Workgroup Meeting
- Member, Autonomy Concussion Safety Protocol Review Committee, (NCAA) Division I, National Collegiate Athletic Association
- Member, Evidence-Based Concussion Subtype Consortium Workgroup, Brain Trauma Foundation
- Member, Concussion Awareness, Research & Education (CARE) Consortium Operating Committee, NCAA Department of Defense
- Member, Operating Committee, NCAA-Department of Defense Brain Health Initiative Grand Alliance Consortium
- Member, Research Committee, American Medical Society for Sports Medicine

### **State/Local**

- Co-Medical Director, UF Undergraduate Athletic Training Program
- Medical Director for Dance Wellness, UF Undergraduate Athletic Training Program
- Member, Steering Committee, Department of Community Health and Family Medicine
- Member, Search Committee Faculty Research Position, Department of Community Health and Family Medicine, University of Florida
- Clinical Director, Sports Concussion Center, UF Student Health Care Center
- Member, Medical Advisory Committee, Research Sub-Committee, University of Florida Athletic Association
- Member, Concussion Committee, University of Florida Athletic Association
- Member, Research Committee, Department of Community Health and Family Medicine, University of Florida

## **Beverly Dede, PhD**

### **State/Local**

- Member, Curriculum Committee, University of Florida
- Member, Student Conduct Committee, University of Florida
- Member, JED Mental Health Task Force, University of Florida
- Mentor, Machen Florida Opportunity Scholars, University of Florida
- Chair, Caroline Annette Cody MD Memorial Scholarship, College of Medicine, University of Florida
- Member, Medical Honors Interview Committee, College of Medicine, University of Florida
- Member, Medical Student Interview Committee, College of Medicine, University of Florida
- Member, Step One Success Subcommittee, College of Medicine, University of Florida
- Ex Officio Member, Academic Status Committee, College of Medicine, University of Florida
- Ex Officio Member, Clerkship Directors' Committee, College of Medicine, University of Florida
- Ex Officio Member, Course Directors' Committee, College of Medicine, University of Florida
- Ex Officio Member, Curriculum Committee, College of Medicine, University of Florida
- Ex Officio Member, Physician Assistant Professional Standards and Promotions Committee, College of Medicine, University of Florida
- Ex Officio Member, Student Advocacy Committee, College of Medicine, University of Florida

# ADMINISTRATIVE SERVICES AND MEMBERSHIPS

## **Alpa Desai, DO**

### **National**

- Member, Editorial Board, American Family Physician Journal
- Member, American College of Osteopathic Family Physicians
- Member, American Academy of Family Physicians
- Member, Advisory Board, Prescriber's Letter

### **State/Local**

- Medical Director, Jonesville, UF Health Family Medicine
- Member, Medical Student Interview Committee, College of Medicine, University of Florida
- Member, Florida Academy of Family Physicians
- Member, PQRI Committee, Department of Community Health and Family Medicine, University of Florida
- Member Steering Committee, Department of Community Health and Family Medicine, University of Florida
- Member, Operations Committee, Department of Community Health and Family Medicine, University of Florida Board
- Member, Medical Student Admissions Committee, UF College of Medicine
- Member, Advisory Board for Prescriber's Letter
- Member and Volunteer, A Very Good Deed (local non-profit organization), Gainesville, FL
- Volunteer, Food 4 Kids Backpack Program, Gainesville, FL

## **Marvin A. Dewar, MD, JD**

### **National**

- Member, Advisory Board, AAMC Vizient Faculty Practice Solutions Center
- Member, Health Equity and Community Health Team, Association of American Medical Colleges
- Member, Editorial Board, Healthcare Professional Liability Review
- Member, Board of Directors, American Heart Association National Faculty Question Writer, Core Content Review of Family Medicine

### **State/Local**

- Senior Associate Dean, College of Medicine, University of Florida
- Associate Dean, Continuing Medical Education, College of Medicine, University of Florida
- CEO, UF Health Physicians, Florida Clinical Practice Association (FCPA)
- Chair, Ambulatory Epic Management Group, UF Health Physicians
- Chair, Medical Director's Committee, UF Health Physicians
- Chair, Clinical Safety Committee, UF Health Physicians
- Chair, Patient Satisfaction Committee (Ambulatory and Inpatient), UF Health
- Chair, Readmission Committee, UF Health
- Chair, Hospitality and Service Task Force, UF Health
- Associate Medical Director, University of Florida Athletic Association
- Lead, Clinical Management Group, UF Health
- Member, Florida Bar Association
- Member, Self-Insurance (SIP) Claims Review Committee, University of Florida
- Member, Self-Insurance (GatorCare) Executive Sponsors Group, University of Florida
- Member, Dean's Finance Group, College of Medicine, University of Florida
- Member, Dean's Leadership Group, College of Medicine, University of Florida
- Member, Dean's Cabinet, College of Medicine, University of Florida
- Member, Epic Governance Committee, College of Medicine, University of Florida
- Member, CME Advisory Committee, College of Medicine, University of Florida
- Member, Senior Vice President of Health Affairs, Forward Together Group, University of Florida
- Member, Recruitment Committee, College of Medicine, University of Florida



# ADMINISTRATIVE SERVICES AND MEMBERSHIPS

- Member, Epic Physician Documentation Leadership
- Member, Clinical IT Steering Committee
- Member, IT Infrastructure Steering Committee
- Member, Data Governance Committee
- Member, Executive IT Steering Committee
- Member, GatorCare Executive Sponsors Group
- Member, Data Governance Committee
- Member, Strategy Group, UF Health
- Member, Medical Executive Committee, UF Health Shands Hospital
- Member, Effectiveness and Efficiency in Patient Care Steering Group, UF Health
- Member, Search Committee, Department of Community Health and Family Medicine, University of Florida
- Member, Alachua County CHOICES Advisory Board, Gainesville, FL
- Reviewer, Family Practice Recertification
- Reviewer, Florida Board of Medicine

## **Samuel Dickmann, MD**

### **State/Local**

- Member, Medical Student Interview Committee, College of Medicine, University of Florida
- Board Member, Chapman Chapter of the Gold Humanism Honor Society, College of Medicine, University of Florida

## **Nicholas Dorsey, MD**

### **National**

- Member, American Academy of Family Physicians
- Member, American Medical Society for Sports Medicine
- Lieutenant, United States Navy Reserves

## **Katie Edenfield, MD, CAQSM**

### **National**

- Member, Research Committee, American Medical Society for Sports Medicine (AMSSM)

### **State/Local**

- Member, Medical Advisory Committee, University of Florida Athletic Association
- Member, Research Committee, Student Health Care Center, University of Florida
- Member, Pre-participation Evaluation (PPE) Committee, University of Florida Athletic Association
- Member, Women's Health and Performance Committee, University of Florida Athletic Association

## **David Feller, MD**

### **National**

- Member, Society of Teachers of Family Medicine
- Member, American Academy of Family Physicians

### **State/Local**

- Chair, Communications Committee, Florida Academy of Family Physicians
- Editor, Florida Academy of Family Physicians
- Member, American Botanical Council

# ADMINISTRATIVE SERVICES AND MEMBERSHIPS

- Member, Selection Committee, Carey R. Barber, MD, Scholarship
- Chair, Steering Committee, Department of Community Health and Family Medicine, University of Florida
- Member, Residency Education Committee, Department of Community Health and Family Medicine, University of Florida

## **Karyn Governale, MD**

### **National**

- Member, American Academy of Family Physicians

## **Jocelyn Gravlee, MD, CAQSM**

### **National**

- Member, American Medical Society for Sports Medicine
- Member, American College of Sports Medicine

### **State/Local**

- Member, Pharmacy Committee, Student Health Care Center, University of Florida
- Member, UAA Medical Advisory Committee

## **Ann Grooms, MD**

### **International**

- Member, World Professional Association Transgender Health

### **National**

- Member, US Professional Association Transgender Health
- Fellow, American Academy of Pediatrics

### **State/Local**

- Member, LGBTQ Committee, University of Florida
- Chair, Pharmacy Committee, Student Health Care Center, University of Florida
- Member, Medical Advisory Committee, University of Florida Athletic Association
- Member, Eating Disorder Task Force, Student Health Care Center, University of Florida
- Member, Gainesville Women's Forum

## **John Gums, PharmD**

### **National**

- Member, National Interdisciplinary Primary Care Practice Based Research Network
- Member, American College of Clinical Pharmacy
- Member, American Association of Colleges of Pharmacy
- Scientific Editor, Pharmacotherapy
- Member, Editorial Board, The Annals of Pharmacotherapy

### **State/Local**

- Editor, PharmaNote Monthly Pharmacy Newsletter
- Member, Florida Pharmacy Association
- Member, Florida Society of Health-system Pharmacists
- Member, International Committee, College of Pharmacy, University of Florida

# ADMINISTRATIVE SERVICES AND MEMBERSHIPS

## **Helen Hagan, MD**

### **National**

- Member, American Academy of Family Physicians

## **Lucia Hansen, MD**

### **National**

- Member, American Association of Family Physicians
- Member, American Medical Association

### **State/Local**

- Member, Search Committee, Department of Community Health and Family Medicine, University of Florida

## **Jonathan G. Harrell, MD**

### **National**

- Member, American Academy of Family Physicians
- Member, American College of Physicians

### **State/Local**

- Member, Alachua County Healthcare Advisory Board
- Director, Health Systems Science Curriculum
- Advisor, Local Global Health Track, College of Medicine, University of Florida
- Member, Program Evaluation and Student Assessment, College of Medicine, University of Florida
- Member, Alachua County Healthcare Advisory Board
- Member, Eastside Community Health Task Force
- Member, Grace Healthcare Services Corps Board
- Member, SHPEP Health Policy Roundtable
- Evaluator, Florida CARES Program, College of Medicine, University of Florida

## **Robert Hatch, MD, MPH**

### **National**

- Member, Society of Teachers of Family Medicine
- Member, Physicians for a National Health Program

### **State/Local**

- Chair, Clerkship Director's Committee, College of Medicine, University of Florida
- Faculty Advisor, Premed American Medical Students Association, University of Florida
- Member, Educational Operations Committee, College of Medicine, University of Florida
- Member, Steering Committee, Department of Community Health and Family Medicine, University of Florida

## **Olga Ihnatsenka, MD**

### **National**

- Member, American Academy of Family Physicians

### **State/Local**

- Member, Florida Academy of Family Physicians

# ADMINISTRATIVE SERVICES AND MEMBERSHIPS

## **Mitul Jones, MD**

### **National**

- Member, American Academy of Family Physicians

## **Jason Konopack, MD, MPH**

### **National**

- Member, American Academy of Family Physicians
- Member, Society of Teachers of Family Medicine

## **Arch Mainous, III, PhD**

### **National**

- Member, Scientific Advisory Board, Iron Disorders Institute
- Member, Society of Teachers of Family Medicine
- Member, American Thoracic Society/National Institutes of Health Workshop 'Enhancing Minority Recruitment and Retention in Clinical Studies'

### **State/Local**

- Member, Research Committee, Department of Community Health and Family Medicine, University of Florida

## **John Malaty, MD**

### **National**

- Co-Chair, Practice Management Collaborative, Society of Teachers of Family Medicine
- Member, Steering Committee, Medical Director's Group, American Academy of Family Physicians
- Member, USMLE Ambulatory Care Test Material Development Committee, National Board of Medical Examiners (NBME)

### **State/Local**

- Member, I3 Regional Collaborative for Florida, South Carolina, North Carolina, and Virginia
- Member, Graduate Medical Education Institutional Program Review Committee
- Chair, Patient Care & Quality Committee, Department of Community Health and Family Medicine, University of Florida
- Director, Resident as Teacher (RasT) Program, College of Medicine, University of Florida
- Resident Applicant Interviewer, Family Medicine Residency Program, University of Florida Member, Medical Executive Committee, UF Health
- Member, Physician Advisory Task Force for EPIC Implementation, UF Health Member, Grade Grievance Committee, College of Medicine, University of Florida
- Member, Evaluation Committee, Department of Community Health and Family Medicine, University of Florida
- Member, Clinical Operations Committee, Department of Community Health and Family Medicine, University of Florida
- Member, Residency Program Curriculum Committee, Department of Community Health and Family Medicine, University of Florida
- Member, Promotions Committee, Department of Community Health and Family Medicine, University of Florida

## **Brenda McMahon, MD**

### **State/Local**

- Member, Medical Guild, College of Medicine, University of Florida

## **Michael McTiernan, MD**

### **National**

- Diplomat, National Board of Medical Examiners
- Member, American Academy of Family Physicians



# ADMINISTRATIVE SERVICES AND MEMBERSHIPS

## **State/Local**

- Member, Clinical Operations Committee, Department of Community Health and Family Medicine, University of Florida
- Member, Community Advisory Board, Community Outreach and Engagement, Cancer Center, UF Health

## **James Medley, MD**

### **National**

- Member, Alpha Omega Alpha Medical Honor Society
- Member, Gold Humanism Honor Society
- Member, American Academy of Family Physicians
- Member, Society of Teachers of Family Medicine

## **State/Local**

- Member, Steering Committee, Department of Community Health and Family Medicine, University of Florida
- Member, Florida Academy of Family Physicians
- Executive Board Member, Chapman Medical Honor Society, College of Medicine, University of Florida

## **Elvira Mercado, MD**

### **National**

- Member, Society of Teachers of Family Medicine
- Member, American Academy of Family Physicians
- Member, American Medical Association

## **State/Local**

- Member, Clinical Operations Committee, Department of Community Health and Family Medicine, University of Florida
- Member, Steering Committee, Department of Community Health and Family Medicine, University of Florida
- Member, Multidisciplinary Academic-Community Obesity Disparities Research Agenda Planning (MACOD-RAP) Team, University of Florida
- Member, Budget Committee, Department of Community Health and Family Medicine, University of Florida
- Member, Medical Student Interview Committee, College of Medicine, University of Florida

## **Susan Millan, MD**

### **National**

- Member, Wound Healing Society
- Member, Undersea and Hyperbaric Medical Society
- Member, Association for the Advancement of Wound Care

## **State/Local**

- Member, Florida Academy of Family Physicians
- Member, Steering Committee, Department of Community Health and Family Medicine, University of Florida
- Chair, Continuing Medical Education Advisory Committee, College of Medicine, University of Florida

## **Ray Moseley, PhD**

### **National**

- Member, Ethical, Legal, Social Issues (ELSI) Working Group, Alpha-1 Foundation
- Member, Research/Registry Working Group, Alpha-1 Foundation

# ADMINISTRATIVE SERVICES AND MEMBERSHIPS

## **State/Local**

- Member and Vice Chair, Institutional Review Board, Health Science Center, University of Florida
- Member, Executive Committee, Institutional Review Board, Health Science Center, University of Florida
- Member, Ethics Committee, UF Health Shands Hospital Consultant, Ethics Consult Service, University of Florida
- UF Health Shands Hospital Member, Executive Committee, Florida Consortium for HIV/AIDS Research
- Member, Pan American Bioethics Initiative Advisory Committee, University of Miami Ethics Programs
- Member, Academic Advisory Committee, Institute for Bioethics and Health Policy, Leonard M. Miller School Medicine, University of Miami
- Member, Board of Directors, Florida Bioethics Network
- Member, Ethics Committee Guideline Drafting Committee, Florida Bioethics Network

## **Danielle Nelson, MD**

### **National**

- Member, American Academy of Family Physicians

### **State/Local**

- UF Health Global Health Collaborative
- Associate Chief Medical Informatics Office
- Member, Santa Clara Valley Health and Hospital System Credentials Committee
- Member, UF Health Primary Pediatric Healthy Planet Steering Committee
- UF Health Healthy Planet Steering Committee

## **Kim Nguyen, MD**

### **National**

- Fellow, American Academy of Pediatrics

### **State/Local**

- Member, Minority Mentor Program, University of Florida

## **Omobola Oduntan, MD, MPH**

### **National**

- Member, American Academy of Family Physicians

## **Frank Orlando, MD**

### **National**

- Member, American Academy of Family Physicians

### **State/Local**

- Member, Florida Academy of Family Physicians
- Member, Quality Improvement Meeting, UF Health Springhill
- Member, Recipient Selection Committee, Carey R. Barber, MD Depression Awareness and Suicide Prevention Scholarship

## **Daniel Rubin, MD**

### **National**

- Member, American Academy of Family Physicians
- Member, Society of Teachers of Family Medicine
- Member, Medical Student Committee, Society of Teachers of Family Medicine

# ADMINISTRATIVE SERVICES AND MEMBERSHIPS

## State/Local

- Member, STFM Medical Student Committee
- Member, College of Medicine Curriculum Committee
- Member, LCME Subcommittee for Medical School Learning Environment
- Member, Medical Education Curriculum Evaluation Subcommittee

## **George Samraj, MD**

### National

- Fellow, American Academy of Family Physicians
- Member, Society of Teachers of Family Medicine

## State/Local

- Chair, Prenatal Care Committee, Family Practice Residency Program, University of Florida

## **Kristy Smith, MD**

### National

- Member, American Academy of Family Physicians
- Member, Society of Teachers of Family Medicine

## State/Local

- Member, Florida Academy of Family Physicians
- Advisor, Medical Student Wellness Program, University of Florida

## **Lauren Solberg, JD, MTS**

### National

- Reviewer, Journal of Graduate Medical Education

## State/Local

- Member, Course Director's Committee, College of Medicine, University of Florida
- Member, Faculty Senate Budget Council, University of Florida
- Member, Faculty Senate, University of Florida
- Member, Curriculum Committee, University of Florida
- Member, Steering Committee, Department of Community Health and Family Medicine, University of Florida
- Consultant, Ethics Consult Service/Member, Ethics Committee, UF Health
- Honorary Member, Lady Gator Golf Boosters
- Member, Recipient Selection Committee, Carey R. Barber, MD Depression Awareness and Suicide Prevention Scholarship

## **John Trainer, III, MD**

### National

- Fellow, American Academy of Family Physicians

## State/Local

- Member, Florida Academy of Family Physicians

# ADMINISTRATIVE SERVICES AND MEMBERSHIPS

## **Petra Townsend, MD**

### **National**

- Member, American Academy of Family Physicians
- Member, Association for the Advancement of Wound Care
- Member, Academy of Physicians in Wound Healing

### **State/Local**

- Member, Florida Academy of Family Physicians

## **Greg Westwood, MD, PhD**

### **National**

- Member, American Academy of Family Physicians

## **Maribeth Williams, MD, MS**

### **National**

- Member, Society of Teachers of Family Medicine
- Member, Communications Committee, North American Primary Care Research Group
- Member, Association of Family Medicine Residency Directors

### **State/Local**

- Member, Florida Academy of Family Physicians
- Co-chair, Residency Director's Council, Florida Academy of Family Physicians
- Member, Advisory Committee, Florida Blue Center for Health Care Quality
- Member, Steering Committee, Department of Community Health and Family Medicine, University of Florida
- Member, Quality Improvement Committee, Department of Community Health and Family Medicine, University of Florida
- Member, Eastside Community Health Task Force, University of Florida
- Chair, Program Evaluation Committee, University of Florida

## **Velyn Wu, MD, CAQSM**

### **National**

- Member, Society of Teachers of Family Medicine
- Member, American Academy of Family Physicians
- Member, American Medical Society of Sports Medicine
- Member, American Institute of Ultrasound in Medicine
- Member, National Lipid Association

### **State/Local**

- Member, Florida Academy of Family Physicians



# PUBLICATIONS, PRESENTATIONS, AND POSTERS

## PUBLICATIONS

Agana DF, Cook R, Young ME, Cruz-Almeida Y, **Carek PJ**, Striley CW. Assessing Outpatient Behavior and Social Determinants of Health in Family Medicine Patients' Readmissions: A Mixed Methods Study. *Ann Fam Med*. Submitted, August 2019

Agana DF, Striley CW, Cook R, Cruz-Almeida Y, **Carek PJ**, Salemi JL. A novel approach to characterizing readmission patterns following hospitalization for ambulatory care-sensitive conditions. *JGIM* 2020;35(4):1060-1068.

Alkhamisi A, Carek S, Dillon M, **Clugston JR**. Atrial Fibrillation Induced From Commotio Cordis. *Clinical Journal of Sports Medicine*. Published December, 2019.

**Allen, WL** "Medical Ethics Issues in Dementia and End of Life." *Curr Psychiatry Rep* 22, 31 (2020). <https://doi.org/10.1007/s11920-020-01150-7>

**Allen, WL** "When "Objectivity" in Clinical Benefit is Seen Through Different Lenses." *The American Journal of Bioethics*, 20:3, 68-70, (2020) DOI: 10.1080/15265161.2020.1714804

Asken BM, Houck ZM, **Clugston JR**, Larrabee GJ, Broglio SP, McCrea MA, McAllister TW, and Bauer RM, and CARE Consortium Investigators. Word-reading ability as a "hold test" in cognitively normal young adults with history of concussion and repetitive head impact exposure: a CARE Consortium study. *The Clinical Psychologist*. Published online ahead of print November 7, 2019.

Asken BM, Houck ZM, Schmidt JD, Bauer RM, Broglio SP, McCrae MA, McAllister TW, **Clugston JR** and CARE Consortium Investigators. A normative reference vs. baseline testing compromise for ImpACT: the CARE Consortium multiple variable prediction (CARE-MVP) norms. *Sports Medicine*. Published online ahead of print February 7, 2020. PubMed PMID: 32034702

Asken BM, Yang Z, Xu H, Weber AG, Hayes RL, Bauer RM, DeKosky S, Jaffee M, Wang KKW, **Clugston JR**. Acute Effects of Sport-Related Concussion on Serum GFAP, UCH-L1, Total Tau, and NF-L Measured by a Multiplex Assay. *Journal of Neurotrauma*. Accepted and online ahead of print February 5, 2020. PubMed PMID: 32024456

Bray SC, **Carek PJ**. How bitter taste influences nutrition and health in primary care. *J Fam Med and Prim Care*. Accepted, April 2020.

Breedlove KM, Ortega J, Kaminski TW, Harmon KG, Schmidt JD, Kontos AP, **Clugston JR**, Chrisman SP, McCrae MA, McAllister TW, Broglio SP, Buckley TA. King-Devick Test Reliability in intercollegiate student-athletes: an NCAA/DoD Concussion Assessment, Research and Education (CARE) Report. *Journal of Athletic Training*. Published online ahead of print October 16, 2019. PubMed PMID: 31618072

Brett BL, Breedlove K, McAllister T, Broglio SP, McCrea MA, CARE Consortium Investigators (**Clugston JR**, et al.). Investigating the range of symptom endorsement at initiation of a graduated return-to-play protocol after concussion and duration of the protocol: a study from the Concussion, Assessment, Research, and Education (CARE) Consortium. *American Journal of Sports Medicine*. Published online ahead of print April 16, 2020. PubMed PMID: 32298132

# PUBLICATIONS, PRESENTATIONS, AND POSTERS

Brett BL, Kramer MD, McCrea MA, Broglio SP, McAllister T, Nelson LD and CARE Consortium Investigators (**Clugston JR**, et al.). Bifactor model of the sport concussion assessment tool symptom checklist: replication and invariance across time in the CARE Consortium sample. *American Journal of Sports Medicine*. Published online ahead of print August 18, 2020. PubMed PMID: 32809856

Caccese JB, Houck ZM, Kaminski TW, **Clugston JR**, Iverson GL, Bryk K, Oldham J, Pasquina PF, Broglio SP, McAllister TW, McCrea M, Buckley TA, CARE Consortium Investigators. Estimated age of first exposure to American football and outcome from concussion. *Neurology*. Accepted December 2, 2019

**Carek PJ**, Mims L, Kirkpatrick S, Williams MP, Zhang R, **Rooks B**, Datta S, Peterson LE, **Mainous AG**. Does community or university-based residency sponsorship affect graduate perceived preparation or performance? *J GME*. Accepted, July 2020.

Carek S, **Clugston JR**. Acute Sports-related Head Injuries. In: Carek PJ. Sports Medicine. Primary Care: Clinics in Office Practice. *Elsevier*. Published online ahead of print October 16, 2019. PubMed PMID: 32014133

Carek S, **Clugston JR**. Primary Care: Clinics in Office Practice. Sports Medicine Issue. Head Trauma and Injuries. *Elsevier*. Published online ahead of print October 20, 2019.

Carek SM, **Edenfield KM**, **Carek PJ**. Preparticipation Evaluation. *Prim Care*. 2020;47(1):1–17. doi:10.1016/j.pop.2019.10.001

**Chang KL**, **Orlando FA**, Donahoo WT. How to manage a patient with weight regain. *Am Fam Physician Fall* 2020. [accepted]

**Chang KL**. Adapt Your Documentation Setup for Telehealth. *Fam Pract Manag*. 2020 May-June;27(3):32

Cicali E, Weitzel W, Elsey A, **Orlando FA**, et al. Challenges and lessons learned from clinical pharmacogenetic implementation of multiple gene-drug pairs across ambulatory care settings. *Genet Med* Oct 2019;21(10):2264-2274. doi: 10.1038/s41436-019-0500-7

**Clugston JR**, Houck, ZM, Asken BM, Boone JK, Kontos AP, Buckley TA, **Schmidt JD**, Chrisman SPD, Hoffman NL, Harmon KG, Kaminski TW, Collins MW, McAllister TW, McCrae MA, Broglio SP, Ortega JD. Relationship between the King-Devick Test and commonly used concussion tests at baseline. *Journal of Athletic Training*. Published online ahead of print October 4, 2019.

DeRemer CE, **Konopack J**, Curtis S. Management of warfarin anticoagulated patients choosing hyperbaric oxygen treatments. *TH Open*, 2019; 03(01): e20-e21. DOI: 10.1055/s-0038-1676984.

DeRemer CE, Lyons SR, Harman EJ, Quinn K, **Konopack J**. “Impact of a student pharmacist pilot focused on the transitions of care process from emergency visits to family medicine follow-up in a rural patient setting.” *Journal of Pharmacy Practice*. Epub: February 19, 2020. <https://doi.org/10.1177/0897190020905468>

**Desai A**. Should you consider testosterone therapy for men with low testosterone due to aging? *Prescriber's Letter Journal Club*. March 2020; 17(3). ISSN #1555-0117 (online)

# PUBLICATIONS, PRESENTATIONS, AND POSTERS

**Desai A.**, Does anticholinergic med use increase the risk of dementia in seniors? *Prescriber's Letter Journal Club*. September 2019; 16(9). ISSN #1555-0117 (online)

**Desai A.**, Does PRN inhaled formoterol/budesonide result in fewer exacerbations in adults with mild asthma compared to PRN albuterol or daily budesonide plus PRN albuterol? *Prescriber's Letter Journal Club*. July 2019; 16(7). ISSN #1555-0117 (online)

**Desai A.**, Does taking blood pressure medications at bedtime reduce cardiovascular risk? *Prescriber's Letter Journal Club*. January 2020; 17(1). ISSN #1555-0117 (online)

**Desai, A.**, Does dapagliflozin improve outcomes in patients with heart failure with reduced ejection fraction? *Prescriber's Letter Journal Club*. November 2019; 16(11). ISSN #1555-0117 (online)

Ebied AM, Jessee J, Chen Y, **Konopack J**, Radhakrishnan N, DeRemer CE. "Factors that influence prescribers' decision for continuation of venous thromboembolism prophylaxis in the medical patient following hospitalization." Accepted with edits: *TH Open* April 2020.

**Edenfield KM.** Sports Supplements: Pearls and Pitfalls. *Prim Care*. 2020;47(1):37–48.  
doi:10.1016/j.pop.2019.10.002

Eldayrie GE(r), **Smith KB**, and Smith MS.(&). Adult foot fractures: A guide to diagnosis and management. *Journal of Family Practice*. In publication.

Fitzgerald Jodi, Andrade Jeanette, Curl Sarah, Smith Elena, Torna Elena, **Nelson Danielle**. Development of Nutrition Counseling Resources for Family Medicine using the Knowledge to Action Framework. *Family Practice*. February 27, 2020.

Fitzgerald, J; Andrade, J; **Nelson, D.** Reducing Your Risk for Arthritis: The Power of Food. Gainesville: University of Florida Institute of Food and Agricultural Sciences. Acceptance April 17, 2020.

Garcia GP, Lavieri MS, Yang J, McCrea MA, McAllister TW, Broglio SP & CARE Consortium Investigators (**Clugston JR**, et al.). Data-driven Stochastic Optimization Approaches to Determine Decision Thresholds for Risk Estimation Models. *Institute of Industrial and Systems Engineers Transactions*. Published online ahead of print February 6, 2020.

Golembiewski EH, **Mainous AG III**, Rahmanian KP, Brumback B, **Rooks BJ**, Krieger JL, Goodman KW, Moseley RE, Harle CA., Effects of interactivity and trust messages on patient experiences with electronically consenting to share their health records for research: A multi-arm randomized clinical trial. *Annals of Family Medicine*, in press.

Haleem Z, Yadav S, Cushion M, Tanner R, **Carek PJ**, **Mainous AG III**. Exposure to N,N-diethyl-meta-toluamide (DEET) Insect Repellent and Human Health Markers: Population Based Estimates from The National Health and Nutrition Examination Survey. *American Journal of Tropical Medicine & Hygiene*. Accepted, April 2020.

# PUBLICATIONS, PRESENTATIONS, AND POSTERS

Harle CA, Golembiewski EH, Rahmanian KP, Brumback B, Krieger JL, Goodman KW, Arch G, **Mainous AG III**, **Moseley RE**. Does an interactive trust-enhanced electronic consent improve patient experiences when asked to share their health records for research? A randomized trial. *Journal of the American Medical Informatics Association* 2019 Jul 1;26(7):620-629.

Hong YR, Hincapie-Castillo JM, Xie Z, Segal R, **Mainous AG III**. Socioeconomic and Demographic Characteristics of US Adults Who Purchase Prescription Drugs from Other Countries. *JAMA Network Open*. 2020;3(6):e208968. doi:10.1001/jamanetworkopen.2020.8968

Hong YR, Huo JH, Jo A, Cardel M, **Mainous AG III**. Association of Patient-Provider Teach-Back Communication with Diabetic Complications, Hospitalization, and Health Expenditures among Individuals with Diabetes: A Population-Based Cohort Study. *Journal of the American Board of Family Medicine*. in press.

Hong YR, Jo A, Xie Z, Cardell M, **Mainous AG III**. Patient-Provider Communication with Teach-Back, Patient-Centered Diabetes Care, and Diabetes Care Education. *Patient Education and Counseling*, in press.

Hong YR, Lawrence J, Williams D Jr, **Mainous A III**. Population-Level Interest and Telehealth Capacity of US Hospitals in Response to COVID-19: Cross-Sectional Analysis of Google Search and National Hospital Survey Data. *JMIR Public Health Surveillance*. 2020;6(2):e18961.

Hong YR, **Mainous AG III**. Development and Validation of a County-Level Social Determinants of Health Risk Assessment Tool for Cardiovascular Disease. *Annals of Family Medicine*. 2020;18(4):318-325. doi:10.1370/afm.2534

Hong YR, **Mainous AG III**. Electronic Cigarette Use and Oral Human Papillomavirus Infection Among US Adult Population: Analysis of 2013–2016 NHANES. *Journal of General Internal Medicine*, in press.

Hong YR, Turner K, Yadav S, Huo J, **Mainous AG III**. Trends in e-visit adoption among U.S. Office-Based Physicians: Evidence from NAMCS 2011-2015. *International Journal of Medical Informatics*. 2019 Sep;129:260-266.

Hong YR., Smith G, Xie Z, **Mainous AG III**, Huo, JH. Financial burden of cancer care under the Affordable Care Act: analysis of MEPS-Experiences with Cancer Survivorship Survey 2011 and 2016. *Journal of Cancer Survivorship* 2019 Aug;13(4):523-536.

Hong, YR., Xie Z, **Mainous AG III**, Huo JH. Patient-centered medical home and up-to-date on screening for breast and colorectal cancer. *American Journal of Preventive Medicine*. 2020; 58(1): 107-116.

Jo A, Coakes C, Coronel BD, **Mainous AG III**. Is there a benefit to patients using wearable devices such as Fitbit or Health Apps on mobiles? A systematic review. *American Journal of Medicine*. 2019 Dec;132(12):1394-1400.e1.



# PUBLICATIONS, PRESENTATIONS, AND POSTERS

Loftus TJ, Hall DJ, **Malaty J**, Kuruppacherry SB, Sarosi GA, Shaw CM, Tan SA, Taylor JA, Morris DS, Meyer LE, Hobbs JA. Associations Between National Board Exam Performance and Residency Program Emphasis on Patient Safety and Interprofessional Teamwork. *Academic Psychiatry*. 2019 Dec;43(6):581-584. doi: 10.1007/s40596-019-01106-x. Epub 2019 Aug 27.

Lumba-Brown A, Cornwell J, Teramoto M, Kolluri R, Gioia G, Bloom J, Chesnutt J, **Clugston JR**, Ghajar J. Representation of concussion subtypes in common postconcussion symptom-rating scales. *Concussion*. Published online ahead of print November 1, 2019.

**Mainous AG III**, Hong YR, Yadav S, Xie Z, Tanner RJ. A practical measure for identification of adults with oncogenic oral human papillomavirus: potential use in primary care. *Family Medicine* 2020;52(1):31-37.

**Mainous AG III**, Mansoor H, Rahmanian K, **Carek PJ**. Perception of risk of developing diabetes among patients with undiagnosed prediabetes: the impact of physician advice. *Clinical Diabetes* 2019 Jul;37(3):221-226.

**Mainous AG III**, **Rooks B**, Tanner RJ, **Carek PJ**, Black V, Coates TD. Shared care for adults with sickle cell disease: an analysis of care from eight health systems. *Journal of Clinical Medicine* 2019 Aug 2;8(8).pii:E1154.

**Mainous AG III**, Saxena S, Beau de Rochars VM, Maccus D. Covid-19 highlights health promotion and chronic disease prevention amid health disparities. *British Journal of General Practice*, in press.

**Mainous AG III**, Schatz D. Is it time to prioritize diabetes prevention in practice?. *Journal of the American Board of Family Medicine* 2019 Jul-Aug;32(4):457-459.

**Mainous AG III**, Xie Z, Yadav S, Williams M, Blue AV, Hong YR. Physician Cultural Competency Training and Impact on Behavior: Evidence from the 2016 National Ambulatory Medical Care Survey. *Family Medicine*, in press.

**Mainous AG III**, Yadav S, Hong YR, Huo J. e-Cigarette and Conventional Tobacco Cigarette Use, Dual Use, and C-Reactive Protein. *Journal of the American College of Cardiology*. 2020;75(17):2271-2273.

**Mainous AG III**, Yadav S, Xie Z, Huo J. Cost or Revenue: Is Diabetes Prevention Doomed Due to Misalignment of Incentives? *Family Medicine and Community Health* 2020;8:e000274.

**Mainous AG III**. A Towering Babel of Risk Information in the COVID-19 Pandemic: Trust and Credibility in Risk Perception and Positive Public Health Behaviors. *Family Medicine*. 2020;52(5):317-319.

**Mainous AG III**. Increasing Research in Residency: The Elusive Goal. *Family Medicine*. 2020;52(2):89-90.

**Mainous AG III**, **Rooks B**, Tanner R, **Carek PJ**, Black V, Coates T. Shared care for adults with sickle cell disease: An analysis of care. *J Clin Med*. 2019 Aug 2;8(8). pii: E1154. doi: 10.3390/jcm8081154.

# PUBLICATIONS, PRESENTATIONS, AND POSTERS

**Mainous AG III, Rooks BJ, Carek PJ.** Methicillin-Resistant Staphylococcus Aureus Colonization in the Community and Mortality Risk among Adults Aged 40 and Older. *J Am Board Fam Med*. Submitted, July 2020.

**Malaty J, Williams M, Carek PJ.** Impact of Providing Data on Family Medicine Practice Management Education. *Family Medicine*. 2020 June. (52) 6: 432-434.

**Malaty J.** Facial and Skull Fractures. *Fracture Management for Primary Care and Emergency Medicine*, 4th Edition, 2019, Elsevier Saunders Company, Philadelphia, PA; pages 368-383

Mansoor H, Jo A, Beau de Rochars VM, Pepine C, **Mainous AG III.** Novel self-report tool for cardiovascular risk assessment. *Journal of the American Heart Association*. 2019 Dec 17;8(24):e014123.

Marlow NM, Samuels S, **Mainous AG III.** Patient-provider communication quality for persons with disabilities: a cross-sectional analysis of the Health Information National Trends Survey. *Disability and Health Journal*. 2019 Oct;12(4):732-737.

**Millan SB, Gan R, Townsend PE.** Venous Ulcers: Diagnosis and Treatment. *American Family Physician*. 2019 Sep 1;100(5):298-305.

**Mitul Jones MD, Philippa Bright MD, Lucia Hansen MD, Olga Ihnatsenka MD, Peter Carek MD MS** Promoting Physical Activity in a Primary Care Practice: Overcoming the Barriers. *American Journal of Lifestyle Medicine*, Aug 2019

**Nanavati M, Saenz S, Swayne K, Carek PJ.** The Golden Letter: Innovative collaboration to reduce avoidable hospital admissions. *J Am Board Fam Med*. Accepted, May 2020.

**Park S, Porter M, Park K, Bielick L, Rooks B, Mainous AG III, Datta S, Carek PJ.** What are the characteristics of 4th year medical students with higher levels of resilience? *Primer* 2019;3:22

Peabody MR, Dai M, Turner K, Peterson L, **Mainous AG III.** Prevalence and factors associated with family physicians providing e-visits. *Journal of the American Board of Family Medicine*. 2019 Nov-Dec;32(6):868-875.

Porter M, Agana DF, **Hatch R, Datta S, Carek PJ.** Medical Schools, Primary Care and Family Medicine: Clerkship Directors' Perceptions of the Current Environment. *Family Practice*. Nov 2019;18;36(6):680-84. DOI: 10.1093/fampra/cmz015.

Porter, M; Agana, DF; **Hatch, RL; Datta, S; Carek, PJ** Medical Schools, Primary Care, and Family Medicine: Perceptions of the Current Environment. *Fam Pract*. 2019 Nov 18;36(6):680-684.

**Rubin DA, Gravlee JR, Hatch R.** Cramp fasciculation syndrome in Athletes: A report of two cases. *Clin Case Rep Rev*, 2019 doi: 10.15761/CCRR.1000466 Volume 5: 2-2

**Saenz S, Prine B, Smith KB, and Smith MS.** Exertional Heat Illness: A Clinical Overview. *Consultant* 360; 59(4):1-7

# PUBLICATIONS, PRESENTATIONS, AND POSTERS

**Serrano D & Wu V.** Implementation of a Novel Return-to-Ride Concussion Management Policy for Collegiate Hunter/Jumper Equestrian Athletes. *Clin Pract Athl Train.* 2020;3(2): 15-30.  
<https://doi.org/10.31622/2020/0002.4>.

Smith MS(&), Olivas J(r), and **Smith KB.** Osteopathic Manipulative Treatment (OMT): What Works? *American Family Physician*;99(4):248-252

**Stefania Bray, Peter Carek,** Case Report, Fissured Tongue, The journal of Family Practice, September 2019, vol 68 How bitter taste influences nutrition and health in primary care, submitted 11/19, *American Journal of Lifestyle Medicine*

**Stefania Bray, Peter Carek,** How bitter taste influences nutrition and health in primary care, *Journal of Family Medicine and Primary Care*, Submitted and accepted 4/2020

Turner K, Hong YR Yadav S, Huo J, **Mainous AG III.** Patient portal utilization: before and after stage 2 electronic health record meaningful use. *Journal of the American Medical Informatics Association.* 2019 Oct 1;26(10):960-967.

Vilaro M, Wilson D, Griffin L, Tavassoli F, Zalake M, Lok B, Modave F, **Carek PJ,** George T, Krieger J. Tailoring Virtual Human-Delivered Interventions: A Digital Intervention promoting Colorectal Cancer Screening for Black Women. *Psycho-Oncology.* Submitted, April 2020.

Wei YJ, Chen C, Fillingim R, **Schmidt SO,** Winterstein AG. "Trends in prescription opioid use and dose trajectories before opioid use disorder or overdose in US adults from 2006 to 2016: A cross-sectional study." *PLoS Med.* 2019 Nov 5;16(11):e1002941. doi: 10.1371/journal.pmed.1002941. eCollection 2019 Nov. PMID: 31689302

Wei YJ, Chen C, **Schmidt SO,** LoCiganic WH, Winterstein AG. "Trends in prior receipt of prescription opioid or adjuvant analgesics among patients with incident opioid use disorder or opioid-related overdose from 2006 to 2016." *Drug Alcohol Depend.* 2019 Nov 1;204:107600. doi: 10.1016/j.drugalcdep.2019.107600. Epub 2019 Sep 27. PMID: 31586806

Wei Y-JJ, Chen C, Fillingim R, **Schmidt SO,** Winterstein AG. Trends in prescription opioid use and dose trajectories before opioid use disorder or overdose in US adults from 2006 to 2016: A cross-sectional study. *PLoS Med* 16(11): e1002941. <https://doi.org/10.1371/journal.pmed.1002941>. Published November 5. 2019.

**Wu V.** Training and Supporting Residents, for All Family Medicine Practice Settings. *Family Medicine* 2019;51(3);290-291

**Wu, V** and Decastro, A. Assessment and Management of Concussions. Society of Teachers of Family Medicine and Association of Family Medicine Residency Directors *Family Medicine Residency Curriculum Resource.* 2019.

# PUBLICATIONS, PRESENTATIONS, AND POSTERS

## PRESENTATIONS

### **Peter Carek, MD, MS, CAQSM**

"Daily Self-Regulation with Biofeedback to Improve Stress and Job Satisfaction in a Primary Care Clinic." Academy of Integrative Health & Medicine National Conference. San Diego, CA. October 2019.

"Shared Care for Adults with Sickle Cell Disease: An Analysis of Care from Eight Health Systems." North American Primary Care Research Group Annual Meeting. Toronto, Ontario, Canada. November 2019.

"Does Community or University-Based Residency Sponsorship Affect Graduate Preparation or Performance?" North American Primary Care Research Group Annual Meeting. Toronto, Ontario, Canada. November 2019.

"Reducing readmission rates on a family medicine inpatient service." Primary Care Innovations. Gainesville, FL. March 2020.

"Rural Adults Reactions to Colorectal Cancer Risk and Screening Information Delivered by Race and Gender Concordant Virtual Health Assistants." American Society of Preventive Oncology Annual Meeting. Tucson, AZ. March 2020.

"Content Considerations for Virtual Human Technology E-health Interventions Delivering Health and Nutrition Message." 41st Annual Meeting & Scientific Sessions of the Society of Behavioral Medicine. San Francisco, CA. April 2020.

"Does Community or University-Based Residency Sponsorship Affect Graduate Preparation or Scope of Practice?" Society of Teachers of Family Medicine Annual Spring Meeting. August 2020.

### **Jay R. Clugston, MD, CAQSM**

COVID and Sports Medicine Webinar for Fellows and Fellowship Directors. American Medical Society for Sports Medicine. August 4, 2020. Invited Panelist.

"American Football. Round-Robin: Unique Aspects of Sport: Pearls for Improving Our Care of Athletes in All Sports." American Medical Society for Sports Medicine. Annual Meeting. Atlanta, GA. April 27, 2020. Invited. Canceled due to COVID-19.

Vestibular/ocular-motor screening research report. American Academy of Optometry. Scientific paper talk. 3rd World Congress of Optometry. Orlando, FL. October 23-26, 2019. Invited. Selected by the Academy Communications Committee as one of the ten most newsworthy at the 2019 Annual Meeting.

"Concussion Evaluation; Making a Decision." American Academy of Neurology Sports Concussion Conference. Indianapolis, IN. July 26, 2019. Invited.

Consideration for Retirement. American Academy of Neurology Sports Concussion Conference. Indianapolis, IN. July 26, 2019. Invited.

# PUBLICATIONS, PRESENTATIONS, AND POSTERS

## **Alpa Desai, DO**

Family Medicine and Patient Presentation. Presented at: Prospective College of Medicine Interview Day, January 2020; Gainesville, FL

## **Katie Edenfield, MD, CAQSM**

Cardiac Cases in Athletes. University of Florida Sports Medicine Fellowship Didactic, Gainesville, FL

Swimming: Following the Long Black Line. Southeastern American College of Sports Medicine Annual Meeting (SEACSM). Jacksonville, FL

Mass Participation Events, University of Florida Sports Medicine Fellowship Didactic, Gainesville, FL

Sports Nutrition, Supplements and Drug Testing, University of Florida Sport Medicine Fellowship Didactic, Gainesville, FL

University of Florida Nutrition Intensive for 1st year medical students: Panel Member. Gainesville, FL.

Sports Cardiology, University of Florida Sports Medicine Fellowship Didactic, Gainesville, FL

## **David Feller, MD**

“Topics in Primary Care and Sports Medicine” for Continuing Education Inc./University at Sea—CME Program on a cruise for physicians, and other health care providers (international participants). Presented 7 hours of a total 14-hour program with topics of LBP, Abnormal LFTs, Herbal medicine, Integrative Medicine, Obesity, Fad Diets and Exercise, HTN (2/8-2/15)

## **Robert Hatch, MD, MPH**

“The American Health Care Crisis and ‘Medicare for All’ as a Possible Solution.” Department of Medicine Grand Rounds, August 2019.

## **Jason Konopack, MD, MPH**

“Improving Clinic Efficiency by Decreasing Number of Late Patients.” Malaty J, Konopack J. Oral presentation – STFM Conference on Practice and Quality Improvement, St. Louis, Missouri. Presentation accepted, but could not be performed due to COVID-19 Pandemic travel-related restrictions.

“Tips to Overcoming Barriers for Implementation of Continuous Glucose Monitoring Services for People Diagnosed with Type 2 Diabetes Mellitus.” Co-Presenters: Sparks J. DeRemer C. Konopack J. Primary Care Innovations Conference. Gainesville FL.



# PUBLICATIONS, PRESENTATIONS, AND POSTERS

## **Arch Mainous, III, PhD**

“Effect of increasing trust in medical researchers on minority recruitment: the RECRUIT randomized clinical trial.” Presented at the 47th annual meeting of the North American Primary Care Research Group, Toronto, CA, November, 2019.

“Shared Care for Adults with Sickle Cell Disease: An Analysis of Care from Eight Health Systems (Health Care Disparities).” Presented at the 47th annual meeting of the North American Primary Care Research Group, Toronto, CA, November, 2019.

“Is there a benefit to patients using wearable devices such as Fitbit or Health Apps on Mobiles? : A systematic review.” Presented at the 47th annual meeting of the North American Primary Care Research Group, Toronto, CA, November, 2019.

“Does Community or University-Based Residency Sponsorship Affect Graduate Preparation or Performance?” Presented at the 47th annual meeting of the North American Primary Care Research Group, Toronto, CA, November, 2019.

“Effects of an interactive trust-enhanced electronic consent on patient experiences with consenting to share their health records for research.” Presented at the 2019 Annual Symposium of the American Medical Informatics Association, Washington, DC, November, 2019.

## **Elvira Mercado, MD**

“Reducing Readmission Rate on a Family Medicine Inpatient Service.” Presented at Primary Care Innovations Conference; March 6, 2020; Gainesville, FL.

“Transitional Care Management.” Presented at Society of Teachers of Family Medicine Conference on Quality and Practice Improvement; Dec 7, 2019; Phoenix, Arizona.

“Why Patients Go To the Emergency Department”. Presented at Society of Teachers of Family Medicine Conference on Quality and Practice Improvement; Dec 7, 2019; Phoenix, Arizona.

“Patient Safety and Quality.” First year medical student preceptorship orientation. Dec 2019. Gainesville, FL

## **Siegfried Schmidt, MD, PhD**

“Technology and EMR in Medical Litigation/Liability”, lecture presented at the 1st Virtual 2020 FAFP Family Medicine Summer Forum, on July 11, 2020.

“Florida Mandatory Opioid Prescribing CME (2 hours)”, lecture presented at the 2019 FAFP Family Medicine Winter Summit, on Dec 6. 2019, at the Ritz Carlton, Amelia Island, FL.

# PUBLICATIONS, PRESENTATIONS, AND POSTERS

## **Lauren Solberg, JD, MTS**

“Key Issues in Law and Ethics.” University of Florida Palliative Care Lunch and Learn, Gainesville, FL. January 2020

Ethics Case Discussion. Malcolm Randall VA Medical Center, VA Geriatric Care Boot Camp, Gainesville, FL. August 2019

## **John Trainer, III, MD**

Didactic Session for the UF Family Medicine Residency: Postpartum Depression. 7 August 2019

## **Velyn Wu, MD, CAQSM**

“Musculoskeletal Education: Insights From the STFM Collaborative on Musculoskeletal and Sports Medicine Education.” Panel presentation. Society of Teachers of Family Medicine Annual Conference – Online. August 24-29, 2020

“It Starts With Me: Enhancing Resident Feedback in a Family Medicine Residency Program.” Completed Project Presentation. Society of Teachers of Family Medicine Annual Conference – Online. August 24-29, 2020

“Beyond those aching joints: Osteoarthritis.” American Academy of Family Physician FMX Family Medicine Experience. Philadelphia, PA. September 24-28, 2019

“Implementation of a Novel Return-to-Ride Concussion Management Policy for Collegiate Hunter/Jumper Equestrian Athletes.” General evidence based practice lecture presentation. 72nd Eastern Athletic Trainers’ Association Annual Meeting and Clinical Symposium. January 10 – 13, 2020. Mashantucket, CT.

“A Peak into the Life of a Family and Sports Medicine Physician.” University of Florida American Medical Student Association general meeting. Gainesville, FL. January 15, 2020

# PUBLICATIONS, PRESENTATIONS, AND POSTERS

## POSTERS

Allen G (f), Edenfield K, Fitch R, Hainline B, Altman J (f), Pitts N (f), **Clugston J**. Trends in Pre-Participation Cardiac Screening among NCAA Division 1 Autonomy Five Institutions. 2020 AMSSM 29th Annual Meeting. Atlanta, GA. April 2020. Displayed virtually on AMSSM Collaborate due to COVID-19.

Allen GJ (f), Smith MS, Bruner ML, Agrawal KR, **Clugston JR**, Prine BR. Screening by Self-Report Underestimates Sick Cell Trait in High School Athletes. 2020 AMSSM 29th Annual Meeting. Atlanta, GA. April 2020. Displayed virtually on AMSSM Collaborate due to COVID-19.

Altman J (f), Hainline BW, Fitch RW, Allen G (f), Pitts NR (f), **Clugston JR**. Mental Health in NCAA Division 1 Autonomy Five Football Programs: Resources and Specified Conditions. 2020 AMSSM 29th Annual Meeting. Atlanta, GA. April 2020. Displayed virtually on AMSSM Collaborate due to COVID-19.

Altman J (f), Kelling M, Asken B, Street J, **Clugston J**, Dillon M, Edenfield K. Examining the Relationship between Arm Span Height Ratio and Aortic Root in Collegiate Athletes. 2020 AMSSM 29th Annual Meeting. Atlanta, GA. April 2020. Displayed virtually on AMSSM Collaborate due to COVID-19.

Aranda A, Carter V, **Chang KL**, Edwards C, Fox C, Gopalan G, Han M, Kaplan A, Kocks J, Mahle C, Make B, Pace W, Price D, Shakh A, Skolnik N COPD Primary Care: Providing a Clinically Relevant Picture for Clinicians North American Primary Care Research Group (NAPCRG) 47th Annual Meeting Toronto, Ontario, Canada, 11/16-20/2019

Aranda A, Carter V, **Chang KL**, Edwards C, Fox C, Gopalan G, Han M, Kaplan A, Kocks J, Mahle C, Make B, Pace W, Price D, Shakh A, Skolnik N An Integrated Approach to Understanding COPD in Primary Care North American Primary Care Research Group (NAPCRG) 47th Annual Meeting Toronto, Ontario, Canada, 11/16-20/2019

Caccese JB, Houck Z (g), Kaminski TW, **Clugston JR**, Iverson GL, Bryk K, Oldham J, Pasquina PF, Broglio SP, McAllister TW, McCrea M, Buckley TA, CARE Consortium Investigators. Estimated age of first exposure (eAFE) to American football and outcome from concussion. American Academy of Neurology Sports Concussion Conference. Indianapolis, IN. July 26, 2019.

Daniel J. Gibson, Debra Lynch Kelly, **Susan Millan**, Debra Lyon, Joyce K. Stechmiller. A Systems Biology Approach To Improved Grouping, Timing, And Statistical Power In The WISH Study Patient Population Of Chronic Wounds. Abstract presented at 2020 WHS Annual Meeting Symposium on Advanced Wound Care Spring Meeting; July 24-26, 2020; Virtual meeting.

Datta ST(g), Houck Z (g), Mitchell M (s), Pfeiffer A (s), **Clugston JR**, Bauer R, Jaffee M. Association between concussion profiles and neurocognitive functioning. American Academy of Neurology Sports Concussion Conference. Indianapolis, IN. July 26, 2019.

Hamner T, Wiggins W, **Clugston J**, Herman D. Prediction of Lower Extremity Overuse Injuries in Collegiate Football Players Using Neurocognitive Performance Testing. 2020 AMSSM 29th Annual Meeting. Atlanta, GA. April 2020. Displayed virtually on AMSSM Collaborate due to COVID-19.

# PUBLICATIONS, PRESENTATIONS, AND POSTERS

Hasan H (f), Moreno C (g), Ansoanuur G (f), Houck Z (g), Bauer R, **Clugston J**. Association of MULES Performance and S3SE Symptom Domains in College Students. 2020 American Academy of Neurology Annual Meeting. Toronto, Canada. April 2020. Displayed virtually due to COVID-19.

Junglyun Kim, Debra Lyon, Michael T. Weaver, Debra L. Kelly, Christiaan Leeuwenburgh, Daniel J. Gibson, Gregory Schultz, **Susan B. Millan**, Jungmin Park, Samantha Hunter, Joyce Stechmiller. Psychoneurologic Symptoms, Cytokines, and Wound Healing In Older Adults With Chronic Venous Leg Ulcers. Abstract presented at 2020 WHS Annual Meeting Symposium on Advanced Wound Care Spring Meeting; July 24-26, 2020; Virtual meeting.

Mehanna M, Chen YE, Gong Y, Handberg EM, Roth B, De Leon J, Smith SM, Paulson H, Montilla-Crespo J, **Harrell JG**, Cooper-DeHoff RM. Optimizing Precision of Hypertension Care to Maximize Blood Pressure Control (OPTI-BP): A Pilot Study Utilizing a Smartphone App. Circulation 2019. Poster presentation at the AHA Annual Meeting. September 5-9, 2019. New Orleans, LA

**Orlando FA**, Rahmanian KP, **Byrd CE**, **Chang KL**, Yang Y, **Carek PJ**, **Lupi ME**. Using a Daily Self-Regulation Practice with Biofeedback to Improve Stress and Job Satisfaction in a Primary Care Outpatient Clinic Academic of Integrative Health & Medicine (AIHM) 2019 Annual Conference San Diego, California, USA 10/12-16/2019

**Orlando FA**, Rahmanian KP, **Byrd CE**, et al. Using a Daily Self-Regulation Practice with Biofeedback to Improve Stress and Job Satisfaction in a Primary Care Outpatient Clinic. Poster presented at the 2019 Academy of Integrated Health & Medicine (AIHM) Annual Conference; October 12-16, 2019; San Diego, CA.

Perez N. Middleton K. Dietrich E. **Konopack J**. DeRemer CE. "Tracking collaborative practice models for effect on productivity shown through work relative value units and patient access." [Student Poster 2-098] American Society of Health-System Pharmacist. Midyear Clinical Meeting. Las Vegas, NV.

Pitts N (f), Dimza M, Reifsteck F, Street J, **Clugston J**, Dillon M, Edenfield K. Gender Differences in Athlete ECG Findings using International Criteria. 2020 AMSSM 29th Annual Meeting. Atlanta, GA. April 2020. Displayed virtually on AMSSM Collaborate due to COVID-19.

Pitts NR (f), Altman J (f), Allen G (f), Fitch R, Hainline BW, **Clugston JR**. Utilization of injection therapies in NCAA Division 1 Autonomy Five Football Programs. 2020 AMSSM 29th Annual Meeting. Atlanta, GA. April 2020. Displayed virtually on AMSSM Collaborate due to COVID-19.

Sparks J. **Konopack J**. DeRemer CE. "Assessing the impact of rural-based ambulatory pharmacist on diabetes care through perceptions of advanced monitoring technologies." [Abstract/Poster 9-2. 213]. American Society of Health-System Pharmacist. Midyear Clinical Meeting. Las Vegas, NV. December 2019.

Stranges PM, McQuade BM, Akinwunmi BO, **Chang KL**, Chupp GL, Coleman E, Dolor RJ, Estrom J, Hernandez ML, Hurley LP, Kuczak J, Nunez A, Mottus K, Riley IL, Pace WD, Shade LE, Thomas J, on behalf of all PREPARE Investigators, Patient Partners, and Stakeholders Guideline Concordant Care Among Highly Impacted Adults With Asthma the Year Leading Up to Enrollment in a Large Pragmatic Asthma Randomized Controlled Trial, Person Empowered Asthma Relief (PREPARE) North American Primary Care Research Group (NAPCRG) 47th Annual Meeting Toronto, Ontario, Canada, 11/16-20/2019

## PUBLICATIONS, PRESENTATIONS, AND POSTERS

**Wu V**, Swartz D. “Improving Electronic Medical Records Preceptor Workflow for Resident Supervision and Patient Safety.” Presented at Society of Teachers of Family Medicine Conference on Practice and Quality Improvement. December 2019. Phoenix, AZ.

**Wu V**. “It is just what we do! Establishing a culture of formative feedback in a family medicine residency program.” Presented at the Keck School of Medicine of University of Southern California Innovations in Medical Education Conference. February 13-14, 2020. Los Angeles, CA.