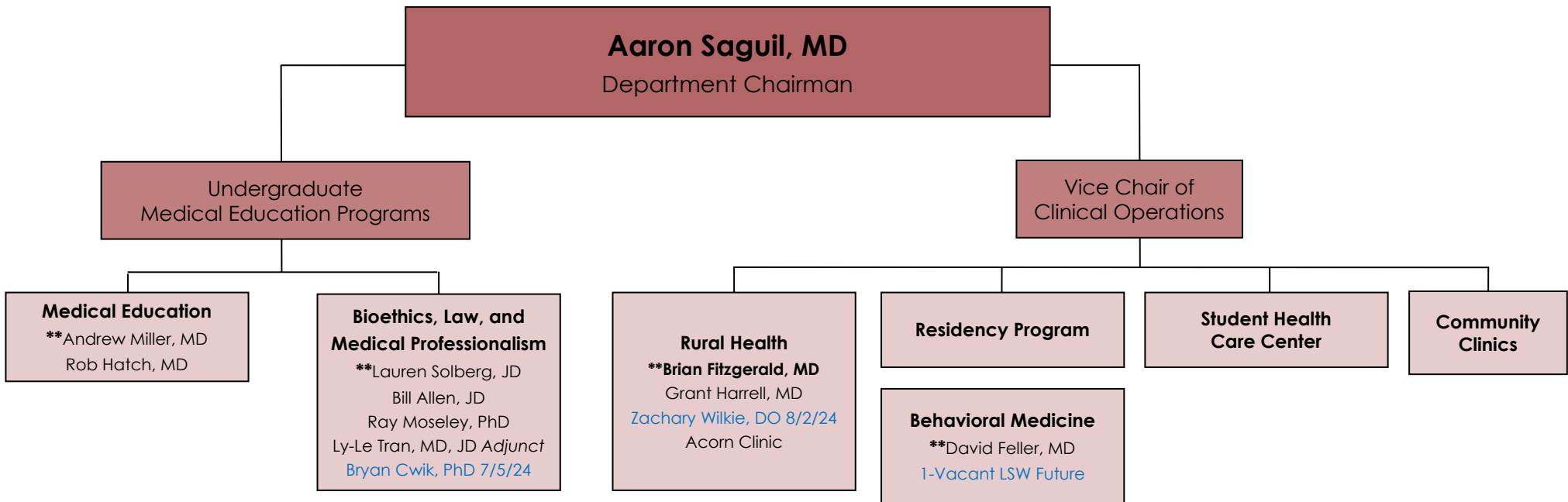


Academic Positions
Total FTE: 60.00

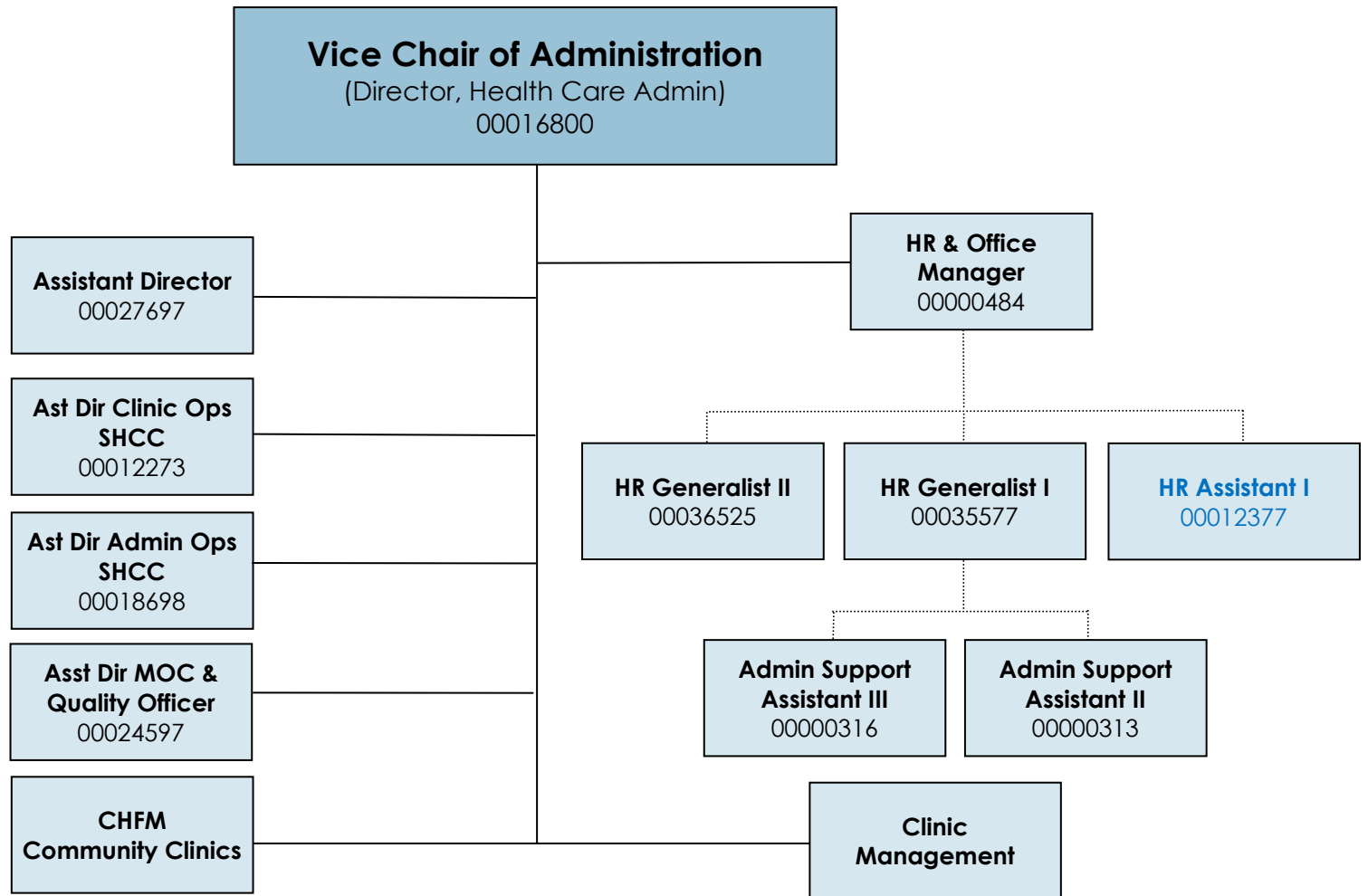
Professor FTE: 4.00	Asst. Professor FTE: 0.00	Assoc. Prof. FTE: 4.00	Clin. Asst. Prof. FTE: 33.00	Clin. Assoc. Prof. FTE: 11.00	Clin. Professor FTE: 4.00	Res. Assoc. Prof. FTE: 1.00	Prof. Emeritus FTE: 3.00
-------------------------------	-------------------------------------	----------------------------------	--	---	-------------------------------------	---------------------------------------	------------------------------------

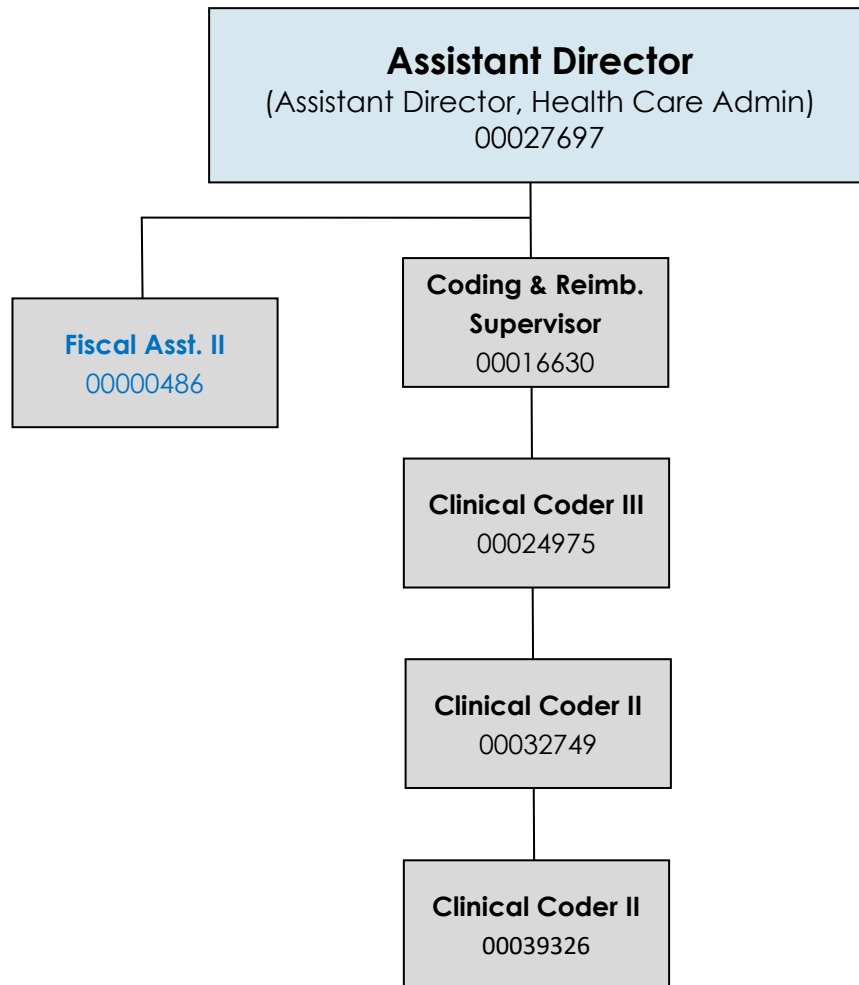
Red text indicates vacancy / impending term

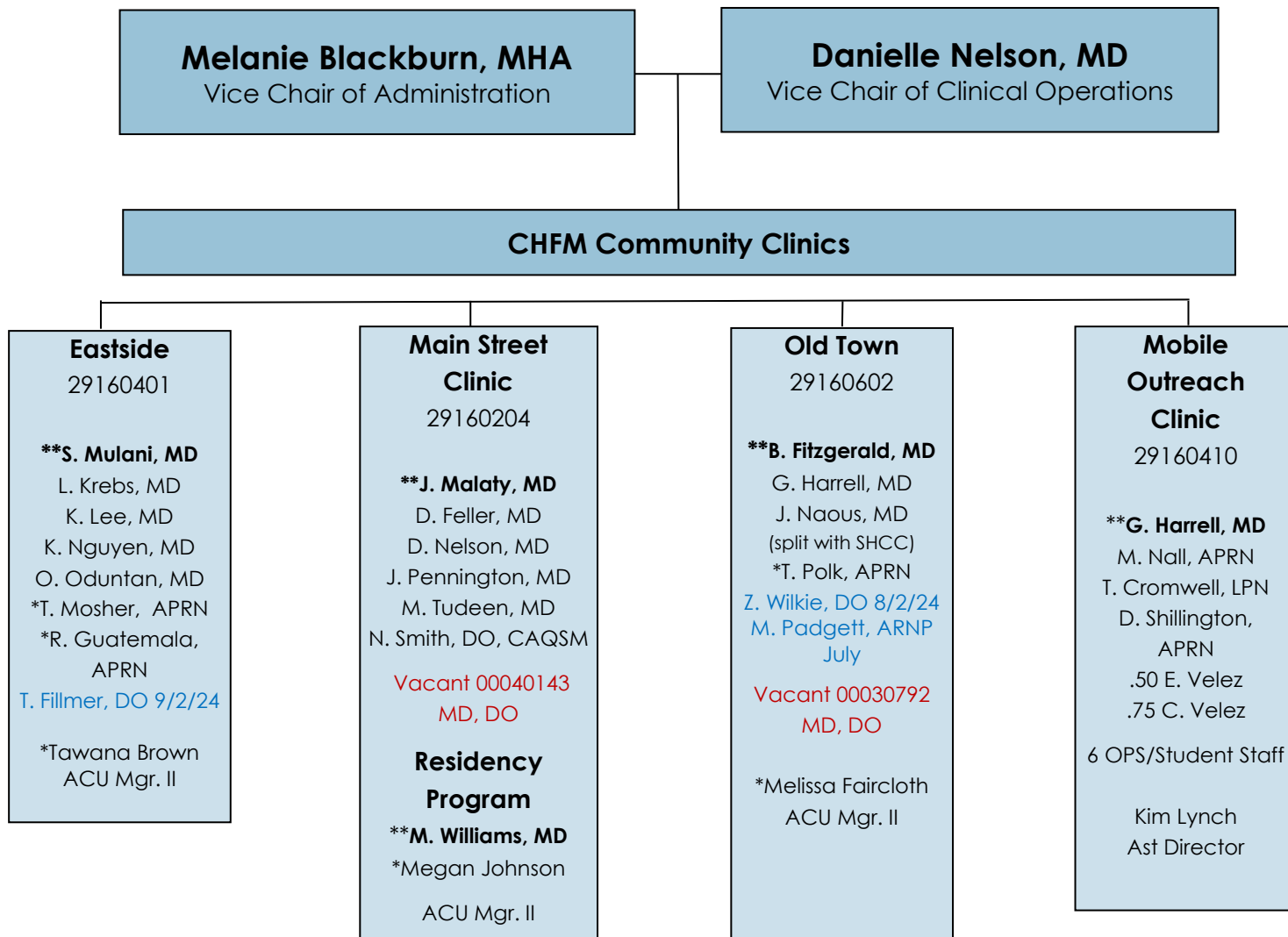
Blue text indicates future start date



**Medical/Program Director

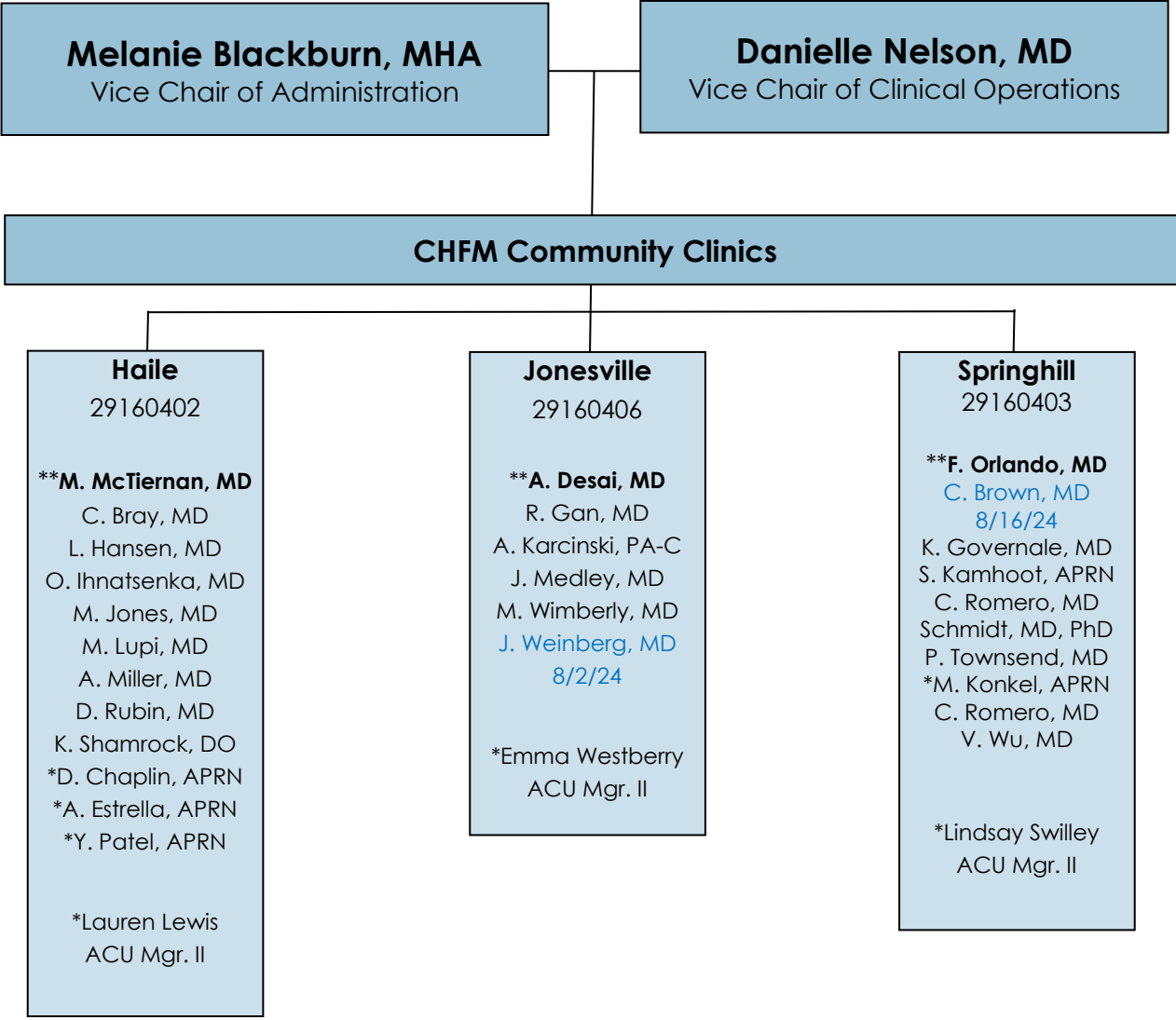






*Shands Employee

**Medical/Program Director



Melanie Blackburn, MHA
Vice Chair of Administration

Danielle Nelson, MD
Vice Chair of Clinical Operations

CHFM Community Clinics

Haile
29160402

****M. McTiernan, MD**
C. Bray, MD
L. Hansen, MD
O. Ihnatsenka, MD
M. Jones, MD
M. Lupi, MD
A. Miller, MD
D. Rubin, MD
K. Shamrock, DO
*D. Chaplin, APRN
*A. Estrella, APRN
*Y. Patel, APRN

*Lauren Lewis
ACU Mgr. II

Jonesville
29160406

****A. Desai, MD**
R. Gan, MD
A. Karcinski, PA-C
J. Medley, MD
M. Wimberly, MD
J. Weinberg, MD
8/2/24

*Emma Westberry
ACU Mgr. II

Springhill
29160403

****F. Orlando, MD**
C. Brown, MD
8/16/24
K. Governale, MD
S. Kamhoot, APRN
C. Romero, MD
Schmidt, MD, PhD
P. Townsend, MD
*M. Konkel, APRN
C. Romero, MD
V. Wu, MD

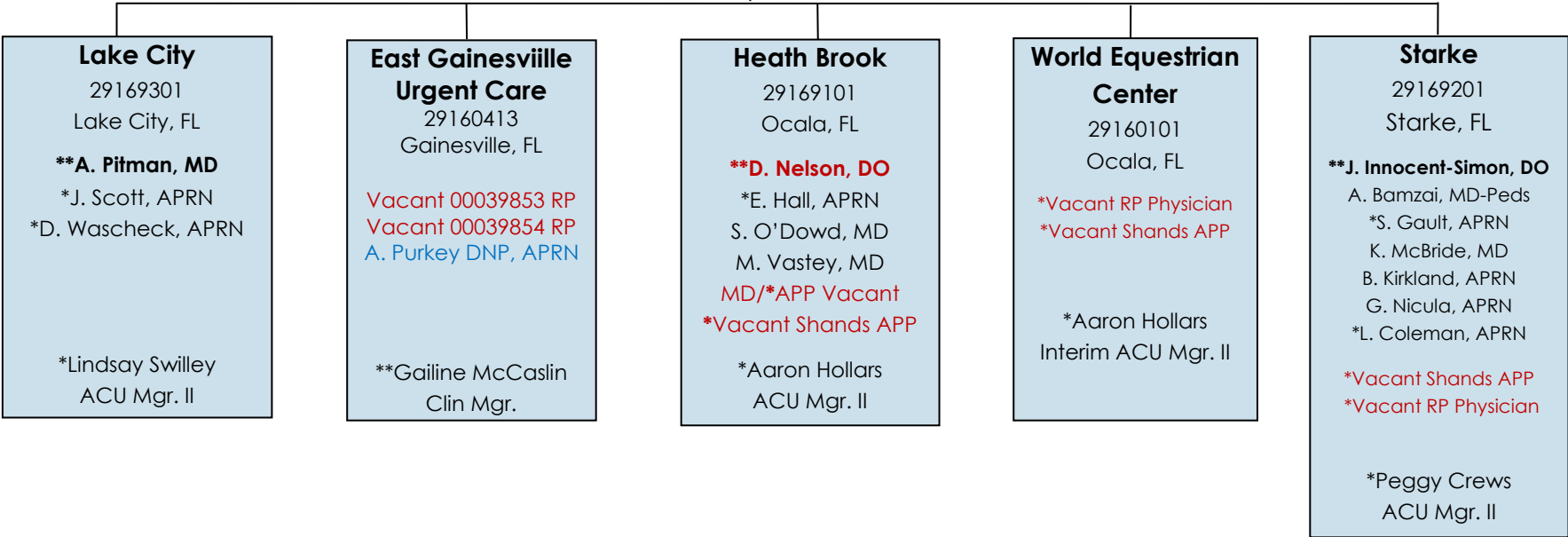
*Lindsay Swilley
ACU Mgr. II

*Shands Employee

**Medical/Program Director

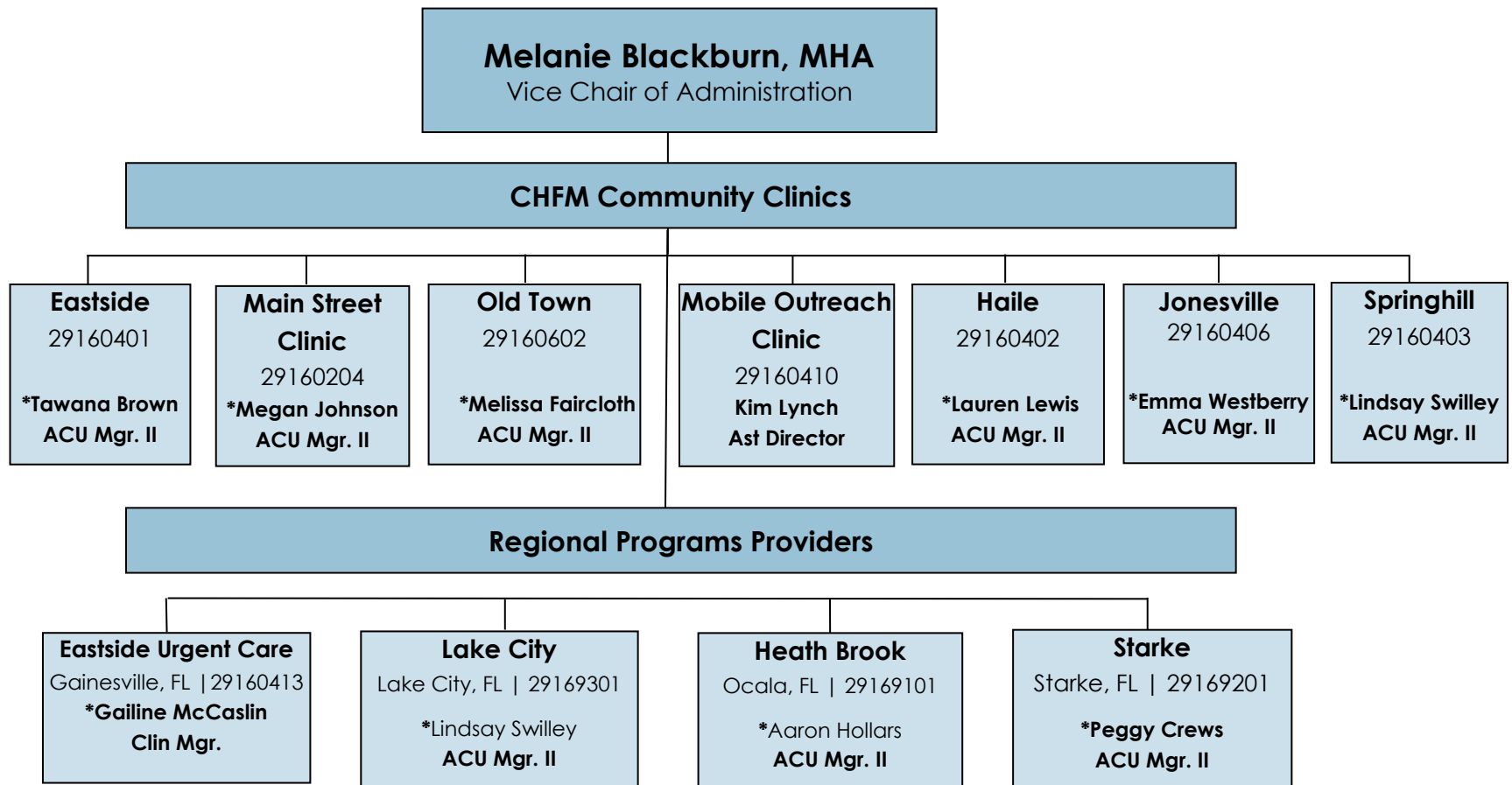
Danielle Nelson, MD
Vice Chair of Clinical Operations

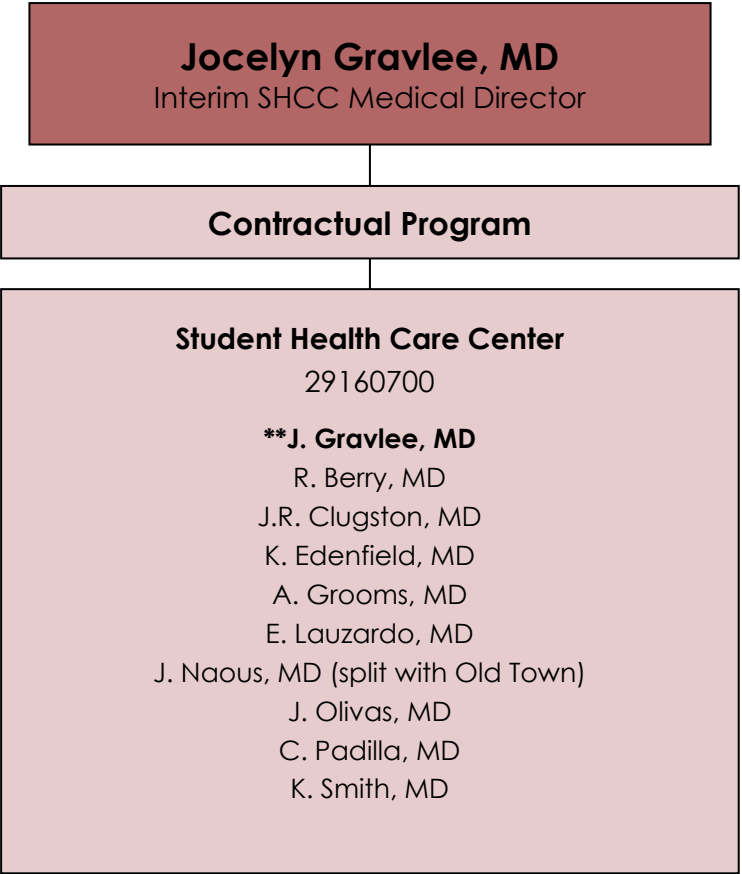
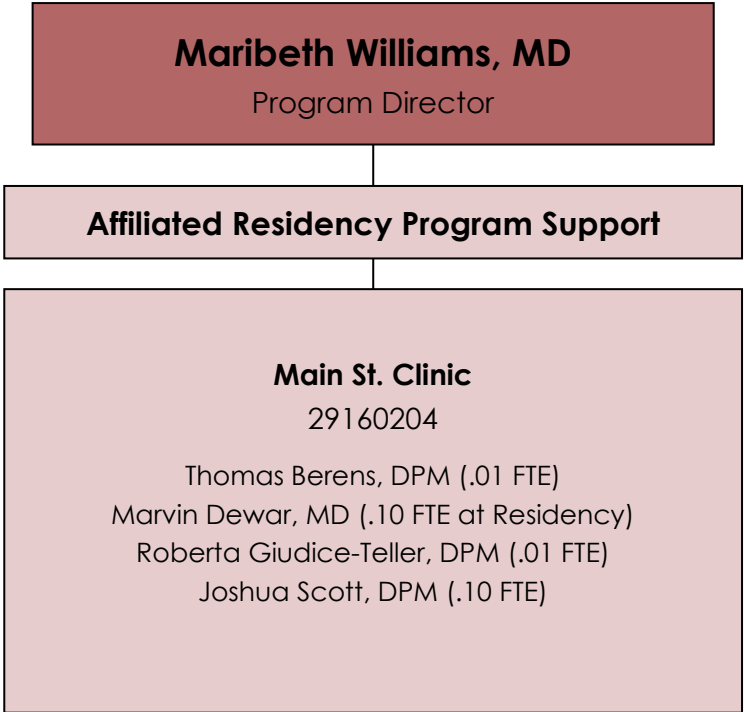
Regional Programs Providers



*Shands Employee

**Medical/Program Director





**Medical/Program Director